

# PRODUCTS BOOK 2024 FOR PROSTHETICS & ORTHOTICS

A CE / ISO13485 CERTIFIED COMPANY YOUR RELIABLE PARTNER



 0086-13521594020

website: [www.limb-prosthetic.com](http://www.limb-prosthetic.com) Email: [frank\\_geng@chppros.com](mailto:frank_geng@chppros.com)

whatsapp/ wechat: +8613521594020



## ***CONTACT US***



**0086-13521594020**

### **Address**

No.7-10, Hua Guan Science and  
Technology Industrial Park, YanJiao,  
HeBei, China 065201

### **website**

[www.limb-prosthetic.com](http://www.limb-prosthetic.com)

### **Email**

[frank\\_geng@chppros.com](mailto:frank_geng@chppros.com)

### **whatsapp/ wechat**

+8613521594020

**CERTIFICATE OF CONFORMITY**



Certificate No. : BKC-161130625

## Certificate of Compliance

**Applicant** : HUAKANG TRADING LIMITED,  
Guozhuanghuo Village, Dong Yang Zhuang Town, BaZhou,  
LangFang City, Hebei Province, China

**Manufacturer** : HUAKANG TRADING LIMITED,  
Guozhuanghuo Village, Dong Yang Zhuang Town, BaZhou,  
LangFang City, Hebei Province, China

**Trade Name** : HK PROS

**Product** : Prosthetics And Orthotics Parts

**M/N** : CHG, CHL  
CHG-01S-12S, CHL-01S-32S, CHL-ER01S-06S, HK01-64,  
ZF01-106, KT01-05, 6R18, 6R20, L2R1

**Test Standard** : EN 71-1:2011 + A3:2014  
EN 71-2:2011 + A1:2014

The EUT described above has been tested by us with the listed standards and found in compliance with the council TOYS directive 2009/48/EC. It is possible to use CE marking to demonstrate the compliance with this TOYS Directive. The certificate applies to the tested sample above mentioned only and shall not imply an assessment of the whole production. It is only valid in connection with the test report No. BKC-161130625





**Shenzhen BKC Testing Co., Ltd.**  
6/F, Building 3, Zhouteng Industrial Park, Nanwan Street, Longgang District,  
Shenzhen, Guangdong, China. Tel: 400-059-0780 0755-32925341  
E-mail: beike1@bkc-lab.com Certificate Search: <http://www.bkc-lab.com>

### ◀ CE

Quality products are the hallmark of HK PROS. In an effort to not only maintain but also continuously improve our quality Specifications, we have implemented a process for quality improvement.

### ISO13485 ▶

HK PROS' s high level of quality has been tested and certified by an independent organization, This internationally recognized certification states that HK PROS meets the Specifications set forth in the international Specifications ISO 13485.



**CERTIFICATION EUROPE** HONG KONG

## Certificate of Registration

Certificate NO: 10136243M

This is to Certify that the Medical Devices Industry Management System of

**HUAKANG TRADING LIMITED**  
Guozhuanghuo Village, Dongyangzhuang Town, Bazhou,  
Langfang City, Hebei Province, China

Has been audited to the following Medical Devices Industry Management System standard:

**ISO13485:2016**

This system is valid for the

**Production and sales of prosthetics and orthotics products  
(upper limb components, lower limb knee joint, components,  
orthotics brace)**

Date of issue: Dec 27, 2022      Date of expiry: Dec. 26, 2025

This certificate will not remain valid only if the certified organization accepts at least one surveillance audit annually within the validity period of the certificate in which the surveillance audit conforming mark is in the designated position on the certificate.





Issued by:  
*Janus*

|          |          |
|----------|----------|
| 12months | 24months |
|----------|----------|



CERTIFICATION EUROPE(HONGKONG)LIMITED    WWW.CCE-HK.COM

## PROSTHETIC KNEEJOINT/ANKLE JOINT FOR LOWER LIMB

### Single Axis Knee Joint with self-lock

Suitable for max. 100 kg (220lbs) body weight

#### Recommendation:

- For trans-femoral amputees · With moderate functional levels
- High stance phase stability · Moderate swing phase control
- Not suitable for amputees with higher functional levels

#### Description:

The connection between upper and lower joint section is generated by the swing- and friction axis and operates as a load dependend brake. This secures, in combination with the posterior positioning, the stance phase. The adjustment of the axis friction and spring load controls the swing phase.

#### Technical Data:

- **Knee flexion range:** approx. 150° · **Height** (knee center - upper edge): 40 mm



| Product Number | Material        | Specification    | Part Weight | Max. Load      |
|----------------|-----------------|------------------|-------------|----------------|
| CHG—01S        | Casting S.Steel | Work with CHF-01 | 669g        | 100Kg / 220Lbs |
| CHG—01T        | Titanium        | work with CHF-01 | 369g        | 125Kg / 275Lbs |

### Single Axis Knee Joint With Adjustable Constant Friction

- Suitable for max. 100 kg (220lbs) body weight

#### Recommendation:

- For trans-femoral amputees · With moderate functional levels
- Moderate stance phase stability · Moderate swing phase control
- Very suitable for longer stump lengths
- Not suitable for amputees with higher functional levels

#### Description:

The knee axis connects the upper and lower joint sections with bushings. Stance phase stability is achieved by placing the knee axis posterior to the weight bearing line. Control of the swing phase is independently provided by the Extension Assist and by adjustment of the axis friction.

#### Technical Data:

- **Knee flexion range:** approx. 155° , **Height** (knee center - upper edge): 25 mm



| Product Number | Material        | Specification    | Part Weight | Max. Load      |
|----------------|-----------------|------------------|-------------|----------------|
| CHG—02S        | Casting S.Steel | Work with CHF-01 | 529g        | 100Kg / 220Lbs |

## Single Axis Knee Joint with Manual Lock

### Recommendation:

- For trans-femoral amputees
- With lower functional levels
- High stance phase stability
- No swing phase control
- Not suitable for amputees with moderate and Higher functional level



### Description:

The knee axis connects the upper and lower joint section with bushings and ball bearings. The adjustable lock secures the knee in extension. Deblock of flexion via lock cable. Self-acting lock at full extension with the help of the extension assist.

### Technical Data:

- Knee flexion range: approx. 120°
- Height (knee axis center - upper edge): 37 mm

| Product Number | Material        | Part Weight | Max. Load      |
|----------------|-----------------|-------------|----------------|
| CHG—03S        | Casting S.Steel | 583g        | 100Kg / 220Lbs |
| CHG—03T        | Titanium        | 300g        | 125Kg / 275Lbs |

## Four Bar Linkage Knee Joint

- Polycentric · With integrated extension assist
- Suitable for max. S.S100 kg (220lbs) / Ti 125Kg(275Lbs)body weight

### Recommendation:

- For trans-femoral amputees · With moderate functional levels
- Medium stance phase stability · Medium swing phase control
- Suitable also for hip disarticulation amputees
- Not suitable for amputees with higher functional levels

### Description:

Upper and lower joint section is connected with linkage bars. The stance phase stability is achieved with the polycentric kinematic ( Adjustment of the instant center of rotation by adjustment of the stop). The Stepless adjustment of the axis friction and of the extension assist spring controls the swing phase.

### Technical Data:

- Knee flexion range: approx. 120° · Height (knee center - upper edge): 37 mm



| Product Number | Material        | Part Weight | Max. Load      |
|----------------|-----------------|-------------|----------------|
| CHG—05S        | Casting S.Steel | 727g        | 100Kg / 220Lbs |
| CHG—05T        | Titanium        | 470g        | 125Kg / 275Lbs |

## Four Bar Knee Joint for Knee Disarticulation

- For knee disarticulation · Polycentric · With mechanical extension assist
- Suitable for max. S.S.100 kg (220lbs) / Ti 125Kg(275Lbs) body weight

### Recommendation:

- For knee disarticulation amputees
- With moderate functional levels
- Normal stability
- Not suitable for insecure amputees and those with higher functional levels

### Description:

The upper joint section with adjustment core and the lower joint section with pyramid are connected to each other with anterior and posterior linkage bars. The lamination anchor is the detachable connection to the socket. The stance phase stability is achieved through polycentric kinematics. Extension assist and axial friction are both adjustable.

### Technical Data:

- Knee flexion range: approx. 110° · Height (knee center - upper edge): 18 mm

| Product Number | Material        | Part Weight | Max. Load      |
|----------------|-----------------|-------------|----------------|
| CHG—06S        | Casting S.Steel | 941g        | 100Kg / 220Lbs |
| CHG—06T        | Titanium        | 517g        | 125Kg / 275Lbs |



## Four Bar Linkage Knee Joint with tube clamp

- Polycentric · With integrated extension assist
- Suitable for max. 100 kg (220Lbs) body weight

### Recommendation:

- For trans-femoral amputees · With moderate functional levels
- Medium stance phase stability · Medium swing phase control
- Suitable also for hip disarticulation amputees
- Not suitable for amputees with higher functional levels

### Description:

Upper and lower joint section is connected with linkage bars. The stance phase stability is achieved with the polycentric kinematic ( Adjustment of the instant center of rotation by adjustment of the stop). The stepless adjustment of the axis friction and of the extension assist spring controls the swing phase.

### Technical Data:

- Knee flexion range: approx. 120°

| Product Number | Material        | Part Weight | Max. Load      |
|----------------|-----------------|-------------|----------------|
| CHG—09S        | Casting S.Steel | 703g        | 100Kg / 220Lbs |





## Polycentric Four Bar Knee Joint

- CHG-09 knee joint is a polycentric knee that is best suited to be used for low functional level and high need for safety.
- The frame construction is made of superlight Aluminum and the 4-bar linkage is made of aircraft alloy (AA7075) . The proximal attachment has A-P slide adjustment. Optional adapters are pyramid adapter (for AK) , J adapter (for KD) and Thread adaptor(M36)



| Product Number | Material | Specification   | Part Weight | Max. Load      |
|----------------|----------|-----------------|-------------|----------------|
| CHG—09P        | Aluminum | Pyramidal       | 660g        | 125Kg / 275Lbs |
| CHG—09J        | Aluminum | Disarticulation | 790g        | 125Kg / 275Lbs |
| CHG—09TH       | Aluminum | Thread M36      | 650g        | 125Kg / 275Lbs |

## Polycentric Four Bar Knee Joint With Manual Lock

K09AL knee joint is a polycentric knee that is best suited to be used for low functional level and high need for safety. The adjustable lock secures the knee in extension. Deblock of flexion via lock cable. Self-acting lock at full extension with the help of the extension assist.

The frame construction is made of superlight Aluminum and the 4-bar linkage is made of aircraft alloy (AA7075) or Titanium . The proximal attachment has A-P slide adjustment. Optional adapters are pyramid adapter (for AK) and J adapter (for KD).



| Product Number | Material | Specification   | Part Weight | Max. Load      |
|----------------|----------|-----------------|-------------|----------------|
| K09—PL         | Aluminum | Pyramidal       | 672g        | 125Kg / 275Lbs |
| K09—JL         | Aluminum | Disarticulation | 800g        | 125Kg / 275Lbs |
| K09—THL        | Aluminum | Thread M36      | 660g        | 125Kg / 275Lbs |

## Polycentric Four Bar Pneumatic Knee Joint

Polycentric Four Bar Pneumatic Knee Joint unit, K13AL, is the most stable with a large stance control angle (up to 32 °) in the current prosthetic and orthotic market. K13AL also has various alignment adjusting abilities, referring to the following instructions, and its weight is less than 1 Kg. Furthermore, the independent adjusting flexion/extension ability makes gait patterns close to normal ones.



| Product Number | Material | Specification   | Part Weight | Max. Load      |
|----------------|----------|-----------------|-------------|----------------|
| K13AL—P        | Aluminum | Pyramidal       | 786g        | 100Kg / 220Lbs |
| K13AL—J        | Aluminum | Disarticulation | 917g        | 100Kg / 220Lbs |
| K13AL—TH       | Aluminum | Thread M36      | 780g        | 100Kg / 220Lbs |

## Polycentric Five Bar Pneumatic knee joint with Lock

K15AL Knee is a polycentric, pneumatic knee joint. Multiple socket connection options support use for different amputation levels.

- Individually adjustable swing phase for a harmonious gait
- Simple modification of the socket connector
- Can be adapted to the user's safety requirements
- More freedom of movement and high comfort in wear

**Amputation Level:** Transfemoral, Knee Disarticulation

**Impact Level:** Moderate Maximum

**Patient Weight:** 100kg (220lbs)

**Weight Of Knee:** 814g **Knee Flexion:** 150°



| Product Number | Material | Specification   | Part Weight | Max. Load      |
|----------------|----------|-----------------|-------------|----------------|
| K15AL—P        | Aluminum | Pyramidal       | 900g        | 100Kg / 220Lbs |
| K15AL—J        | Aluminum | Disarticulation | 1031g       | 100Kg / 220Lbs |
| K15AL—TH       | Aluminum | Thread M36      | 894g        | 100Kg / 220Lbs |



## Ankle Joint for Two Hole Fixed Foot

- Fit with Double Axis foot of FJ03 (two hole fixed)
- with plantar flexion bumper and lower joint bushing.

The foot position (heel height) and dorsal flexion are adjusted through an elastic dorsal stop.



| Product Number | Material        | Specification    | Part Weight | Max. Load      |
|----------------|-----------------|------------------|-------------|----------------|
| CHG—10S1       | Casting S.Steel | For Foot 22-25cm | 313g        | 100Kg / 220Lbs |
| CHG—10S2       | Casting S.Steel | For Foot 26-30cm | 320g        | 100Kg / 220Lbs |
| CHG—10T1       | Titanium        | For Foot 22-25cm | 192g        | 125Kg / 275Lbs |
| CHG—10T2       | Titanium        | For Foot 26-30cm | 200g        | 125Kg / 275Lbs |

## Ankle Joint for One Hole Fixed Foot

- Fit with single Axis foot of FJ02(one hold fixed)
- with plantar flexion bumper and lower joint bushing.

The foot position (heel height) and dorsal flexion are adjusted through an elastic dorsal stop.



| Product Number | Material        | Specification    | Part Weight | Max. Load      |
|----------------|-----------------|------------------|-------------|----------------|
| CHG—11S1       | Casting S.Steel | For Foot 22-25cm | 285g        | 100Kg / 220Lbs |
| CHG—11S2       | Casting S.Steel | For Foot 26-30cm | 310g        | 100Kg / 220Lbs |
| CHG—11T1       | Titanium        | For Foot 22-25cm | 206g        | 125Kg / 275Lbs |
| CHG—11T2       | Titanium        | For Foot 26-30cm | 215g        | 125Kg / 275Lbs |

## Four Bar Linkage Joint For Hip Disarticulation

- Polycentric
- With integrated extension assist

### Recommendation:

- For trans-femoral amputees · With moderate functional levels
- Medium stance phase stability · Medium swing phase control
- Suitable also for hip disarticulation amputees
- Not suitable for amputees with higher functional levels

### Description:

Upper and lower joint section is connected with linkage bars. The stance phase stability is achieved with the polycentric kinematic ( adjustment of the instant center of rotation by adjustment of the stop). The stepless adjustment of the axis friction and of the extension assist spring controls the swing phase.

### Technical Data:

- Knee flexion range: approx. 120°



| Product Number | Material        | Part Weight | Max. Load      |
|----------------|-----------------|-------------|----------------|
| CHG—12S        | Casting S.Steel | 1030g       | 100Kg / 220Lbs |
| CHG—12AL       | Aluminum        | 800g        | 100Kg / 220Lbs |

## PROSTHETIC COMPONENTS FOR LOWER LIMB

### Tube Clamp Adaptor

- Work with Aluminum tube  $\varnothing$  30 mm
- Plastic jacket in two color(black \blue)
- With 4 adjustment set screws M8x12



| Product Number | Material | Part Weight | Max. Load      |
|----------------|----------|-------------|----------------|
| CHL—01S        | S.Steel  | 116g        | 100Kg / 220Lbs |
| CHL—01T        | Titanium | 76g         | 125Kg / 275Lbs |
| CHL—01AL       | Aluminum | 85g         | 100Kg / 220Lbs |

### Tube Clamp Adaptor (Pyramidal)

- work with aluminum tube  $\varnothing$ 30mm
- plastic jacket in two color( black \blue)



| Product Number | Material | Part Weight | Max. Load      |
|----------------|----------|-------------|----------------|
| CHL—02S        | S.Steel  | 105g        | 100Kg / 220Lbs |

### Angle Tube Clamp Adaptor(10° Tilt)

- For tubes  $\varnothing$  30 mm
- Plastic jacket in two color(black \blue)
- With 4 adjustment set screws M8x12mm



| Product Number | Material | Specification | Part Weight | Max. Load      |
|----------------|----------|---------------|-------------|----------------|
| CHL—03S        | S.Steel  | 10° Tilt      | 132g        | 100Kg / 220Lbs |
| CHL—03T        | Titanium | 10° Tilt      | 88g         | 125Kg / 275Lbs |

### Four Prong Adaptor (Pyramidal)

- With adjustment core and lamination anchor
- For trans-tibial sockets
- For direct lamination
- With lamination dummy (Aluminum not include)



| Product Number | Material | Part Weight | Max. Load |
|----------------|----------|-------------|-----------|
| CHL-04S        | S.Steel  | 121g        | 220lbs    |
| CHL-04T        | Titanium | 76g         | 275lbs    |
| CHL-04AL       | Aluminum | 71g         | 220lbs    |

### Four Prong Adaptor (Pyramidal Receiver)

- With 4 adjustment set screws M8x12 mm



| Product Number | Material | Part Weight | Max. Load      |
|----------------|----------|-------------|----------------|
| CHL-05S        | S.Steel  | 105g        | 100Kg / 220Lbs |

### Four Prong Adaptor (Rotatable And Adjustable)



| Product Number | Material        | Part Weight | Max. Load      |
|----------------|-----------------|-------------|----------------|
| CHL-06S        | S.Steel         | 130g        | 100Kg / 220Lbs |
| CHL-06T        | Titanium        | 95g         | 125Kg / 275Lbs |
| CHL-06MS       | Casting S.Steel | 142g        | 100Kg / 220Lbs |

### Four Prong Adaptor Pyramidal (Rotatable And Adjustable)



| Product Number | Material        | Part Weight | Max. Load      |
|----------------|-----------------|-------------|----------------|
| CHL—06AS       | S.Steel         | 130g        | 100Kg / 220Lbs |
| CHL—06AT       | Titanium        | 81g         | 125Kg / 275Lbs |
| CHL—06AMS      | Casting S.Steel | 109g        | 100Kg / 220Lbs |

### Socket Adaptor Pyramidal Receiver (Rotatable And Adjustable)



| Product Number | Material        | Part Weight | Max. Load      |
|----------------|-----------------|-------------|----------------|
| CHL—07S        | S.Steel         | 144g        | 100Kg / 220Lbs |
| CHL—07T        | Titanium        | 89g         | 125Kg / 275Lbs |
| CHL—07MS       | Casting S.Steel | 148g        | 100Kg / 220Lbs |

### Socket Adaptor Pyramidal (Rotatable And Adjustable)



| Product Number | Material        | Part Weight | Max. Load      |
|----------------|-----------------|-------------|----------------|
| CHL—07AS       | S.Steel         | 129g        | 100Kg / 220Lbs |
| CHL—07AT       | Titanium        | 76g         | 125Kg / 275Lbs |
| CHL—07AMS      | Casting S.Steel | 134g        | 100Kg / 220Lbs |

### Socket Adaptor (Pyramidal)

- With adjustment core
- For connection of different modular parts or Distal socket ends



| Product Number | Material | Part Weight | Max. Load      |
|----------------|----------|-------------|----------------|
| CHL-08S        | S.Steel  | 107g        | 100Kg / 220Lbs |
| CHL-08T        | Titanium | 49g         | 125Kg / 275Lbs |

### Socket Adaptor

- With 4 adjustment set screws M8x12
- For connection of different modular parts or distal socket end



| Product Number | Material | Part Weight | Max. Load      |
|----------------|----------|-------------|----------------|
| CHL-09S        | S.Steel  | 115g        | 100Kg / 220Lbs |
| CHL-09T        | Titanium | 55g         | 125Kg / 275Lbs |
| CHL-09AL       | Aluminum | 84g         | 100Kg / 220Lbs |

### Socket Adaptor (Rotundity)



| Product Number | Material | Part Weight | Max. Load      |
|----------------|----------|-------------|----------------|
| CHL-09AS       | S.Steel  | 143g        | 100Kg / 220Lbs |



### Three Anchor Adaptor Pyramidal (Non-Rotatable)

- For direct lamination into trans-femoral sockets



| Product Number | Material        | Part Weight | Max. Load      |
|----------------|-----------------|-------------|----------------|
| CHL—10AS       | Casting S.Steel | 147g        | 100Kg / 220Lbs |

### Three Anchor Rotatable Socket Adaptor (Pyramidal)

- With lamination anchor
- For direct lamination into trans-femoral sockets



| Product Number | Material | Part Weight | Max. Load      |
|----------------|----------|-------------|----------------|
| CHL—10S        | S.Steel  | 165g        | 100Kg / 220Lbs |
| CHL—10T        | Titanium | 146g        | 125Kg / 275Lbs |

### Three Anchor Rotatable Socket Adaptor ( Pyramidal Receiver)

- With adjustment set screws M8x12,
- With lamination anchor
- For direct lamination into trans-femoral sockets



| Product Number | Material | Part Weight | Max. Load      |
|----------------|----------|-------------|----------------|
| CHL—11S        | S.Steel  | 180g        | 100Kg / 220Lbs |
| CHL—11T        | Titanium | 152g        | 125Kg / 275Lbs |

### Four Anchor Rotatable Socket Adaptor (Pyramidal)



| Product Number | Material | Part Weight | Max. Load      |
|----------------|----------|-------------|----------------|
| CHL-12AS       | S.Steel  | 147g        | 100Kg / 220Lbs |
| CHL-12AT       | Titanium | 119g        | 125Kg / 275Lbs |

### Four Anchor Rotatable Socket Adaptor (Pyramidal Receiver)



| Product Number | Material | Part Weight | Max. Load      |
|----------------|----------|-------------|----------------|
| CHL-12S        | S.Steel  | 162g        | 100Kg / 220Lbs |
| CHL-12T        | Titanium | 133g        | 125Kg / 275Lbs |

### Thread Adaptor (Pyramidal)



| Product Number | Material | Part Weight | Max. Load      |
|----------------|----------|-------------|----------------|
| CHL-30AS       | S.Steel  | 65g         | 100Kg / 220Lbs |
| CHL-30AT       | Titanium | 38g         | 125Kg / 275Lbs |

### Thread Adaptor(Receiver)



| Product Number | Material | Part Weight | Max. Load      |
|----------------|----------|-------------|----------------|
| CHL—30S        | S.Steel  | 80g         | 100Kg / 220Lbs |
| CHL—30T        | Titanium | 52g         | 125Kg / 275Lbs |

### Double Head Adaptor(Pyramidal)



| Product Number | Material | Part Weight | Max. Load      |
|----------------|----------|-------------|----------------|
| CHL—34S        | S.Steel  | 123g        | 100Kg / 220Lbs |

### Thread Adaptor( knee Joint connection)



| Product Number | Material | Specification | Part Weight | Max. Load |
|----------------|----------|---------------|-------------|-----------|
| CHL—36AL       | Aluminum | M36           | 30g         | 220lbs    |

## Short Adaptor



| Product Number | Material | Length | Part Weight | Max. Load      |
|----------------|----------|--------|-------------|----------------|
| CHL-13S45      | S.Steel  | 45mm   | 95g         | 100Kg / 220Lbs |
| CHL-13S60      |          | 60mm   | 108g        |                |
| CHL-13S75      |          | 75mm   | 120g        |                |
| CHL-13S90      |          | 90mm   | 135g        |                |
| CHL-13AL45     | Aluminum | 45mm   | 66g         |                |
| CHL-13AL60     |          | 60mm   | 75g         |                |
| CHL-13AL75     |          | 75mm   | 83g         |                |
| CHL-13AL90     |          | 90mm   | 93g         |                |

## Short Adaptor(Thread)



| Product Number | Material | Length | Part Weight | Max. Load      |
|----------------|----------|--------|-------------|----------------|
| CHL-14S40      | S.Steel  | 40mm   | 115g        | 100Kg / 220Lbs |
| CHL-14S55      |          | 55mm   | 145g        |                |
| CHL-14S70      |          | 70mm   | 176g        |                |
| CHL-14S85      |          | 85mm   | 198g        |                |

### Socket Adaptor(Thread)



| Product Number | Material        | Length | Part Weight | Max. Load      |
|----------------|-----------------|--------|-------------|----------------|
| CHL—14BS40     | S.Steel         | 40mm   | 178g        | 100Kg / 220Lbs |
| CHL—14BS55     |                 | 55mm   | 208g        |                |
| CHL—14BS70     |                 | 70mm   | 239g        |                |
| CHL—14BT40     | Titanium        | 40mm   | 153g        | 125Kg / 275Lbs |
| CHL—14BT55     |                 | 55mm   | 183g        |                |
| CHL—14BT70     |                 | 70mm   | 214g        |                |
| CHL—14BMS40    | Casting S.Steel | 40mm   | 153g        | 100Kg / 220Lbs |
| CHL—14BMS55    |                 | 55mm   | 183g        |                |
| CHL—14BMS70    |                 | 70mm   | 214g        |                |

### Three Anchor AK Adaptor (Thread)



| Product Number | Material        | Length | Part Weight | Max. Load      |
|----------------|-----------------|--------|-------------|----------------|
| CHL—14AS40     | Casting S.Steel | 40mm   | 215g        | 100Kg / 220Lbs |
| CHL—14AS55     |                 | 55mm   | 245g        |                |
| CHL—14AS70     |                 | 70mm   | 276g        |                |

### Four Anchor AK Adaptor (Thread)



| Product Number | Material        | Length | Part Weight | Max. Load      |
|----------------|-----------------|--------|-------------|----------------|
| CHL—14CS40     | Casting S.Steel | 40mm   | 197g        | 100Kg / 220Lbs |
| CHL—14CS55     |                 | 55mm   | 227g        |                |
| CHL—14CS70     |                 | 70mm   | 258g        |                |

### Four Anchor BK Adaptor(Thread)



| Product Number | Material        | Length | Part Weight | Max. Load      |
|----------------|-----------------|--------|-------------|----------------|
| CHL—14DS40     | S.Steel         | 40mm   | 197g        | 100Kg / 220Lbs |
| CHL—14DS55     |                 | 55mm   | 227g        |                |
| CHL—14DS70     |                 | 70mm   | 258g        |                |
| CHL—14DMS40    | Casting S.Steel | 40mm   | 158g        | 100Kg / 220Lbs |
| CHL—14DMS55    |                 | 55mm   | 188g        |                |
| CHL—14DMS70    |                 | 70mm   | 219g        |                |





## Double Head Adaptor(Pyramidal)



| Product Number | Material | Length | Part Weight | Max. Load      |
|----------------|----------|--------|-------------|----------------|
| CHL—15S32      | S.Steel  | 32mm   | 119g        | 100Kg / 220Lbs |
| CHL—15S45      |          | 45mm   | 154g        |                |
| CHL—15S60      |          | 60mm   | 172g        |                |
| CHL—15S75      |          | 75mm   | 191g        |                |
| CHL—15AL45     | Aluminum | 45mm   | 115g        |                |
| CHL—15AL60     |          | 60mm   | 135g        |                |
| CHL—15AL75     |          | 75mm   | 156g        |                |

## Double Head Adaptor



| Product Number | Material | Length | Part Weight | Max. Load      |
|----------------|----------|--------|-------------|----------------|
| CHL—16S32      | S.Steel  | 32mm   | 119g        | 100Kg / 220Lbs |
| CHL—16S45      |          | 45mm   | 154g        |                |
| CHL—16S60      |          | 60mm   | 172g        |                |
| CHL—16S75      |          | 75mm   | 191g        |                |
| CHL—16T32      | Titanium | 32mm   | 90g         | 125Kg / 275Lbs |
| CHL—16T45      |          | 45mm   | 100g        |                |
| CHL—16T60      |          | 60mm   | 110g        |                |
| CHL—16T75      |          | 75mm   | 120g        |                |
| CHL—16AL32     | Aluminum | 32mm   | 100g        | 100Kg / 220Lbs |
| CHL—16AL45     |          | 45mm   | 115g        |                |
| CHL—16AL60     |          | 60mm   | 128g        |                |
| CHL—16AL75     |          | 75mm   | 142g        |                |

### SACH Foot Adaptor



| Product Number | Material | Specification | Part Weight | Max. Load      |
|----------------|----------|---------------|-------------|----------------|
| CHL-18S        | S.Steel  | M10           | 121g        | 100Kg / 220Lbs |
| CHL-18T        | Titanium | M10           | 87g         | 125Kg / 275Lbs |
| CHL-18AL       | Aluminum | M10           | 100g        | 100Kg / 220Lbs |

### Socket Adaptor



| Product Number | Material | Part Weight | Max. Load      |
|----------------|----------|-------------|----------------|
| CHL-19S        | S.Steel  | 238g        | 100Kg / 220Lbs |
| CHL-19AL       | Aluminum | 110g        | 100Kg / 220Lbs |



Socket Plate 



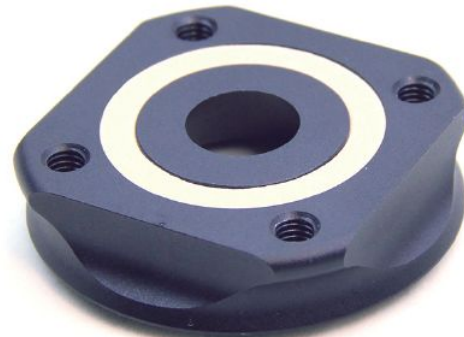
CHL-1901AL



L05AL



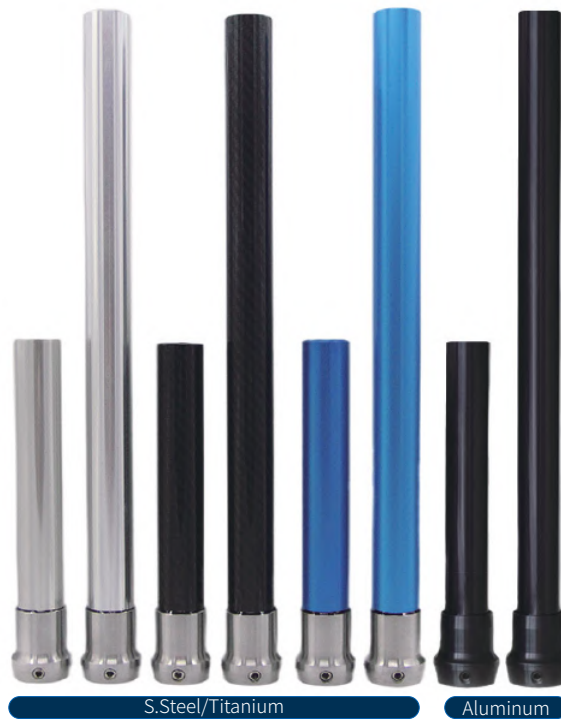
CHL-37AL



| Product Number | Material | Part Weight | Max. Load      |
|----------------|----------|-------------|----------------|
| CHL-1901AL     | Aluminum | 21g         | 100Kg / 220Lbs |
| L05AL          | Aluminum | 37g         | 100Kg / 220Lbs |
| CHL-37AL       | Aluminum | 67g         | 100Kg / 220Lbs |

## Pylon Adaptor

- With Aluminum tube  $\varnothing$  30 mm
- Aluminum tube in Three color(blue\Silver\black)
- With 4 adjustment set screws M8x12 / M8\*14



| Product Number | Material | Color     | Length | Part Weight | Max. Load      |
|----------------|----------|-----------|--------|-------------|----------------|
| CHL—420SE      | S.Steel  | Blue(E)   | 420mm  | 308g        | 100Kg / 220Lbs |
| CHL—420SR      |          | Silver(R) |        |             |                |
| CHL—420SK      |          | Black(K)  |        |             |                |
| CHL—220SE      |          | Blue(E)   | 220mm  | 200g        |                |
| CHL—220SR      |          | Silver(R) |        |             |                |
| CHL—220SK      |          | Black(K)  |        |             |                |
| CHL—420TE      | Titanium | Blue(E)   | 420mm  | 270g        | 125Kg / 275Lbs |
| CHL—420TR      |          | Silver(R) |        |             |                |
| CHL—420TK      |          | Black(K)  |        |             |                |
| CHL—220TE      |          | Blue(E)   | 220mm  | 167g        |                |
| CHL—220TR      |          | Silver(R) |        |             |                |
| CHL—220TK      |          | Black(K)  |        |             |                |
| CHL—420AL      | Aluminum | Black     | 420mm  | 278g        | 100Kg / 220Lbs |
| CHL—220AL      |          |           | 220mm  | 178g        |                |

### 34mm pylon Adaptor

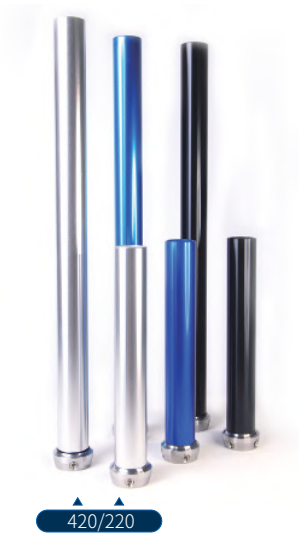
- With Aluminum tube  $\varnothing$  34 mm
- Aluminum tube in Two colors (Silver/black)
- With 4 adjustment set screws M8x12



| Product Number | Material | Color     | Length | Part Weight | Max. Load      |
|----------------|----------|-----------|--------|-------------|----------------|
| CHL—N440SR     | S.Steel  | Silver(R) | 440mm  | 454g        | 125Kg / 275Lbs |
| CHL—N440SK     |          | Black(K)  |        |             |                |

### Pylon Adaptor (Low Waist)

- With Aluminum tube  $\varnothing$  30 mm
- Aluminum tube in Three color(blue\Silver\black)
- Low waist adapter design.
- With 4 adjustment set screws M8x12 / M8\*14



| Product Number | Material | Color     | Length | Part Weight | Max. Load      |
|----------------|----------|-----------|--------|-------------|----------------|
| CHL—N420SE     | S.Steel  | Blue(E)   | 420mm  | 320g        | 100Kg / 220Lbs |
| CHL—N420SR     |          | Silver(R) |        |             |                |
| CHL—N420SK     |          | Black(K)  |        |             |                |
| CHL—N220SE     |          | Blue(E)   | 220mm  | 209g        |                |
| CHL—N220SR     |          | Silver(R) |        |             |                |
| CHL—N220SK     |          | Black(K)  |        |             |                |

### Carbon Fiber Pylon Adaptor



| Product Number | Material | Length | Part Weight | Max. Load      |
|----------------|----------|--------|-------------|----------------|
| CHL—420SC      | S.Steel  | 420mm  | 232g        | 100Kg / 220Lbs |
| CHL—220SC      |          | 220mm  | 167g        |                |
| CHL—420TC      | Titanium | 420mm  | 184g        | 125Kg / 275Lbs |
| CHL—220TC      |          | 220mm  | 125g        |                |
| CHL—420ALC     | Aluminum | 420mm  | 188g        | 100Kg / 220Lbs |
| CHL—220ALC     |          | 220mm  | 130g        |                |

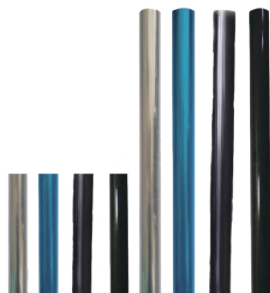
### Carbon Fiber Pylon Adaptor (Low Waist)



| Product Number | Material | Length | Part Weight | Max. Load      |
|----------------|----------|--------|-------------|----------------|
| CHL—420SCN     | S.Steel  | 420mm  | 232g        | 100Kg / 220Lbs |
| CHL—220SCN     |          | 220mm  | 167g        |                |

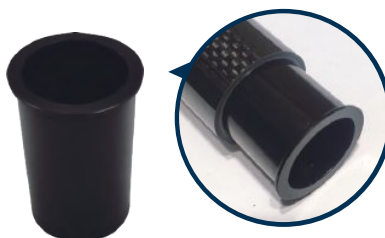


**Pylon** 



| Product Number | Material     | Color     | Length | Part Weight | Max. Load      |
|----------------|--------------|-----------|--------|-------------|----------------|
| CHL—400E       | Aluminum     | Blue(E)   | 400mm  | 196g        | 100Kg / 220Lbs |
| CHL—400R       |              | Silver(R) |        |             |                |
| CHL—400K       |              | Black(K)  |        |             |                |
| CHL—400CF      | Carbon Fiber | —         | 98g    |             |                |
| CHL—200E       | Aluminum     | Blue(E)   | 200mm  | 116g        |                |
| CHL—200R       |              | Silver(R) |        |             |                |
| CHL—200K       |              | Black(K)  |        |             |                |
| CHL—200CF      | Carbon Fiber | —         | 58g    |             |                |

**Reinforced Tube for Carbon Fiber Pylon** 



| Product Number | Material | Part Weight | Max. Load      |
|----------------|----------|-------------|----------------|
| CHL—C01AL      | Aluminum | 17g         | 100Kg / 220Lbs |

**Pylon Adaptor (Height Adjustable)** 



| Product Number | Material | Color  | Part Weight | Max. Load      |
|----------------|----------|--------|-------------|----------------|
| CHL—20NSK      | Aluminum | Black  | 360g        | 125Kg / 275Lbs |
| CHL—20NSR      |          | Silver | 360g        |                |

### Pylon Height Adjustable(200mm~400mm)



| Product Number | Material | Color      | Pylon Length | Part Weight | Max.Load       |
|----------------|----------|------------|--------------|-------------|----------------|
| CHL-20N200K    | Aluminum | Black (K)  | 200mm        | 405g        | 125Kg / 275Lbs |
| CHL-20N300K    |          |            | 300mm        |             |                |
| CHL-20N400K    |          |            | 400mm        |             |                |
| CHL-20N200R    |          | Silver (R) | 200mm        |             |                |
| CHL-20N300R    |          |            | 300mm        |             |                |
| CHL-20N400R    |          |            | 400mm        |             |                |
| CHL-20N200E    |          | Blue (E)   | 200mm        |             |                |
| CHL-20N300E    |          |            | 300mm        |             |                |
| CHL-20N400E    |          |            | 400mm        |             |                |

### AK Socket Adaptor



| Product Number | Material        | Part Weight | Max. Load      |
|----------------|-----------------|-------------|----------------|
| CHL—21MS       | Casting S.Steel | 232g        | 100Kg / 220Lbs |
| CHL—21AL       | Aluminum        | 150g        |                |

## BK Socket Adaptor



| Product Number | Material        | Part Weight | Max. Load      |
|----------------|-----------------|-------------|----------------|
| CHL—22MS       | Casting S.Steel | 200g        | 100Kg / 220Lbs |
| CHL—22AL       | Aluminum        | 150g        |                |

## Sliding Adaptor



| Product Number | Material | Part Weight | Max. Load      |
|----------------|----------|-------------|----------------|
| CHL—23S        | S.Steel  | 288g        | 100Kg / 220Lbs |
| CHL—23T        | Titanium | 177g        | 125Kg / 275Lbs |
| CHL—23AL       | Aluminum | 167g        | 100Kg / 220Lbs |

## Double Head Adaptor(Height Adjustable)



| Product Number | Material | Part Weight | Max. Load      |
|----------------|----------|-------------|----------------|
| CHL—24S        | S.Steel  | 288g        | 100Kg / 220Lbs |
| CHL—24T        | Titanium | 177g        | 125Kg / 275Lbs |

### Three Anchor AK Socket Adaptor



| Product Number | Material        | Part Weight | Max. Load      |
|----------------|-----------------|-------------|----------------|
| CHL—25MS       | Casting S.Steel | 100g        | 100Kg / 220Lbs |

### Four Anchor BK Socket Adaptor



CHL-26MS

CHL-26S

| Product Number | Material        | Part Weight | Max. Load      |
|----------------|-----------------|-------------|----------------|
| CHL—26S        | S.Steel         | 76g         | 100Kg / 220Lbs |
| CHL—26MS       | Casting S.Steel | 43g         |                |

### AK Bolck Attachment Adaptor



CHL-27MS

CHL-27S/CHL-27T

| Product Number | Material        | Part Weight | Max. Load      |
|----------------|-----------------|-------------|----------------|
| CHL—27S        | S.Steel         | 68g         | 100Kg / 220Lbs |
| CHL—27T        | Titanium        | 38g         | 125Kg / 275Lbs |
| CHL—27MS       | Casting S.Steel | 63g         | 100Kg / 220Lbs |

### Four Anchor AK Socket Adaptor



| Product Number | Material        | Part Weight | Max. Load      |
|----------------|-----------------|-------------|----------------|
| CHL—28MS       | Casting S.Steel | 82g         | 100Kg / 220Lbs |

### Knee Rotation Adaptor



| Product Number | Material | Part Weight | Max. Load      |
|----------------|----------|-------------|----------------|
| CHL—29S        | S.Steel  | 266g        | 100Kg / 220Lbs |
| CHL—29T        | Titanium | 168g        | 125Kg / 275Lbs |

### Total Knee Adaptor



| Product Number | Material | Part Weight | Max. Load      |
|----------------|----------|-------------|----------------|
| CHL—30BS       | S.Steel  | 118g        | 100Kg / 220Lbs |

### Knee Joint Connection Adaptor



| Product Number | Material        | Part Weight | Max. Load      |
|----------------|-----------------|-------------|----------------|
| CHL-31S        | S.Steel         | 67g         | 100Kg / 220Lbs |
| CHL-31MS       | Casting S.Steel | 63g         |                |

### J-type Adaptor For Socket(Adult)



| Product Number | Material        | Part Weight | Max. Load      |
|----------------|-----------------|-------------|----------------|
| CHL-32MS       | Casting S.Steel | 128g        | 100Kg / 220Lbs |

### L-type Adaptor For Hip(Adult)



| Product Number | Material | Part Weight | Max. Load      |
|----------------|----------|-------------|----------------|
| CHL-33S        | S.Steel  | 300g        | 100Kg / 220Lbs |

## SHUTTLE LOCK SYSTEM

### Four / Three Prong Shuttle Lock For AK



| Product Number | Material | Part Weight | Max. Load      |
|----------------|----------|-------------|----------------|
| L01AL-3        | Aluminum | 300g        | 125Kg / 275Lbs |
| L01AL-4        |          | 310g        |                |

### Four Prong Shuttle Lock For BK



| Product Number | Material | Part Weight | Max. Load      |
|----------------|----------|-------------|----------------|
| L02AL-4B       | Aluminum | 280g        | 125Kg / 275Lbs |
| L02AL-4S       |          | 274g        |                |
| L02AL-4MS      |          | 241g        |                |
| L02AL-3        |          | 298g        |                |

**Easy Lock** 



(S.Steel) L07S-3 / L07T-3 (Titanium)



(S.Steel) L07S-4B / L07T-4B (Titanium)



(S.Steel) L07S-4MS / L07T-4MS (Titanium)



(S.Steel) L07S-4S / L07T-4S (Titanium)

| Product Number | Material | Part Weight | Max. Load      |
|----------------|----------|-------------|----------------|
| L07S-3         | S.Steel  | 251g        | 100Kg / 220Lbs |
| L07S-4B        |          | 233g        |                |
| L07S-4MS       |          | 194g        |                |
| L07S-4S        | 227g     |             |                |
| L07T-3         | Titanium | 202g        | 125Kg / 275Lbs |
| L07T-4B        |          | 184g        |                |
| L07T-4MS       |          | 145g        |                |
| L07T-4S        |          | 178g        |                |



### Shuttle Lock



| Product Number | Material | Part Weight | Max. Load      |
|----------------|----------|-------------|----------------|
| LN-01          | Aluminum | 280g        | 125Kg / 275Lbs |

### Four hole Housing Pin Lock



| Product Number | Material | Part Weight | Max. Load      |
|----------------|----------|-------------|----------------|
| L06AL          | Aluminum | 225g        | 125Kg / 275Lbs |

### Eazy Push shuttle lock



| Product Number | Material | Part Weight | Max. Load      |
|----------------|----------|-------------|----------------|
| LR-01          | NYLON    | 112g        | 100Kg / 220Lbs |

### Easy Push Shuttle Lock Dummy



| Product Number | Material | Part Weight |
|----------------|----------|-------------|
| LR—DM          | Aluminum | 190g        |

### Lock Pin



| Product Number | Material | Part Weight | Max. Load      |
|----------------|----------|-------------|----------------|
| LP01SR         | S.Steel  | 18g         | 100Kg / 220Lbs |
| LP01SN         |          |             |                |

### Lock core



| Product Number | Material | Part Weight | Max. Load      |
|----------------|----------|-------------|----------------|
| LP02NW         | Aluminum | 42g         | 100Kg / 220Lbs |

## PEDIATRICS FOR LOWER LIMB

### Tube Clamp Adaptor (Pediatric)

- Designed solely for use in transtibial prostheses
- For tubes  $\varnothing$  22mm;
- With 4 adjustment set screws M8\*10;



| Product Number | Material | Part Weight | Max. Load  |
|----------------|----------|-------------|------------|
| CHL—P01S       | S.Steel  | 66g         | 45Kg/99lbs |
| CHL—P01AL      | Aluminum | 29g         | 45Kg/99lbs |

### Tube Clamp Adaptor Pyramidal(Pediatric)

- Designed solely for use in transtibial prostheses
- For tubes  $\varnothing$  22mm;



| Product Number | Material | Part Weight | Max. Load  |
|----------------|----------|-------------|------------|
| CHL—P02S       | S.Steel  | 70g         | 45Kg/99lbs |

### Tube Clamp Adaptor 10° tilt (Pediatric)



| Product Number | Material | Part Weight | Max. Load  |
|----------------|----------|-------------|------------|
| CHL—P03S       | S.Steel  | 75g         | 45Kg/99lbs |

### Four Prong Adaptor Pyramidal (Pediatric)

- With adjustment core and lamination anchor
- For transtibial sockets
- For direct lamination



| Product Number | Material | Part Weight | Max. Load  |
|----------------|----------|-------------|------------|
| CHL—P04S       | S.Steel  | 48g         | 45Kg/99lbs |
| CHL—P04AL      | Aluminum | 40g         | 45Kg/99lbs |

### Four Prong Adaptor Pyramidal Pediatric (Rotatable And Adjustable)



| Product Number | Material | Part Weight | Max. Load  |
|----------------|----------|-------------|------------|
| CHL—P05S       | S.Steel  | 95g         | 45Kg/99lbs |
| CHL—P05AL      | Aluminum | 62g         | 45Kg/99lbs |

### Four Prong Adaptor Pyramidal Receiver Pediatric (Rotatable and adjustable)



| Product Number | Material | Part Weight | Max. Load  |
|----------------|----------|-------------|------------|
| CHL—P06S       | S.Steel  | 98g         | 45Kg/99lbs |
| CHL—P06AL      | Aluminum | 63g         | 45Kg/99lbs |

### Socket Adaptor (Pediatric)

The CHL-P07 Socket Adaptor is intended solely for use in transtibial and transfemoral prostheses With 4 adjustment set screws M6x8mm.



| Product Number | Material | Part Weight | Max. Load  |
|----------------|----------|-------------|------------|
| CHL—P07S       | S.Steel  | 68g         | 45Kg/99lbs |
| CHL—P07AL      | Aluminum | 50g         | 45Kg/99lbs |

### Socket Adaptor Pyramidal(Pediatric)

The CHL-P08 Socket Adaptor is intended solely for use in transtibial and transfemoral prostheses With 4 adjustment set screws M6x8mm.



| Product Number | Material | Part Weight | Max. Load  |
|----------------|----------|-------------|------------|
| CHL—P08S       | S.Steel  | 68g         | 45Kg/99lbs |

### SACH Foot Adaptor (Pediatric)

- For connection of different modular parts or distal socket ends
- Connected with SACH foot for children, sizes 14cm-19cm



| Product Number | Material | Specification | Part Weight | Max. Load  |
|----------------|----------|---------------|-------------|------------|
| CHL—P09S       | S.Steel  | M8            | 60g         | 45Kg/99lbs |
| CHL—P09T       | Titanium | M8            | 33g         | 45Kg/99lbs |
| CHL—P09AL      | Aluminum | M8            | 55g         | 45Kg/99lbs |

### Four Anchor BK Socket Adaptor(Pediatric)



| Product Number | Material | Part Weight | Max. Load  |
|----------------|----------|-------------|------------|
| CHL—P10S       | S.Steel  | 41g         | 45Kg/99lbs |
| CHL—P10AL      | Aluminum | 15g         | 45Kg/99lbs |

### AK Bolck Attachment Adaptor(Pediatric)



| Product Number | Material | Part Weight | Max. Load  |
|----------------|----------|-------------|------------|
| CHL—P11S       | S.Steel  | 48g         | 45Kg/99lbs |
| CHL—P11AL      | Aluminum | 38g         |            |

### Thread Adaptor pediatric (Pyramidal)



| Product Number | Material | Part Weight | Max. Load  |
|----------------|----------|-------------|------------|
| CHL—P12S       | S.Steel  | 39g         | 45Kg/99lbs |

### Thread Adaptor Pediatric (Receiver)



| Product Number | Material | Part Weight | Max. Load  |
|----------------|----------|-------------|------------|
| CHL—P13S       | S.Steel  | 44g         | 45Kg/99lbs |

### Socket Connector(Pediatric)



| Product Number | Material | Part Weight | Max. Load  |
|----------------|----------|-------------|------------|
| CHF—P02        | Nylon    | 51g         | 45Kg/99lbs |

### Socket Adaptor Pyramidal Pediatric (Rotatable And Adjustable)



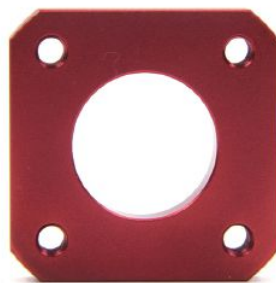
| Product Number | Material | Part Weight | Max. Load  |
|----------------|----------|-------------|------------|
| CHL—P14S       | S.Steel  | 101g        | 45Kg/99lbs |
| CHL—P14AL      | Aluminum | 80g         |            |

### Socket Adaptor Pyramidal Receiver Pediatric (Rotatable And Adjustable)



| Product Number | Material | Part Weight | Max. Load  |
|----------------|----------|-------------|------------|
| CHL—P15S       | S.Steel  | 102g        | 45Kg/99lbs |
| CHL—P15AL      | Aluminum | 80g         |            |

### Pediatric Laminated Socket Plate



| Product Number | Material | Part Weight | Max. Load    |
|----------------|----------|-------------|--------------|
| CHL—P16AL      | Aluminum | 23g         | 45Kg / 99Lbs |

### Pediatric PP /PE socket connector



| Product Number | Material | Part Weight | Max. Load    |
|----------------|----------|-------------|--------------|
| CHL—P17AL      | Aluminum | 61g         | 45Kg / 99Lbs |



## Pediatric Short Pylon Adaptor



| Product Number | Material | Length | Part Weight | Max. Load    |
|----------------|----------|--------|-------------|--------------|
| P18AL40        | Aluminum | 40mm   | 35g         | 45Kg / 99Lbs |
| P18AL50        |          | 50mm   | 35g         |              |
| P18AL60        |          | 60mm   | 38g         |              |
| P18AL75        |          | 75mm   | 45g         |              |

## Pediatric Double Head Adaptor



| Product Number | Material | Length | Part Weight | Max. Load    |
|----------------|----------|--------|-------------|--------------|
| P19AL26        | Aluminum | 26mm   | 44g         | 45Kg / 99Lbs |
| P19AL32        |          | 32mm   | 49g         |              |
| P19AL40        |          | 40mm   | 52g         |              |
| P19AL50        |          | 50mm   | 63g         |              |

### Pediatric Pyramid to Adult Receiver adaptor



| Product Number | Material | Part Weight | Max. Load    |
|----------------|----------|-------------|--------------|
| CHL—P20S       | S.Steel  | 123g        | 45Kg / 99Lbs |

### Adult Pyramid to Pediatric Receiver adaptor



| Product Number | Material | Part Weight | Max. Load    |
|----------------|----------|-------------|--------------|
| CHL—P21S       | S.Steel  | 99g         | 45Kg / 99Lbs |

### Pediatric Double Pyramid Adaptor



| Product Number | Material | Part Weight | Max. Load    |
|----------------|----------|-------------|--------------|
| CHL—P22S       | S.Steel  | 49g         | 45Kg / 99Lbs |

### Pediatric Double Head Adaptor (Height Adjustable)



| Product Number | Material | Part Weight | Max. Load    |
|----------------|----------|-------------|--------------|
| CHL—P23AL      | Aluminum | 73g         | 45Kg / 99Lbs |

### Pediatric AK Socket Adaptor (Threaded)



| Product Number | Material | Part Weight | Max. Load    |
|----------------|----------|-------------|--------------|
| CHL—P24AL      | Aluminum | 108g        | 45Kg / 99Lbs |

### Pediatric BK Socket Adaptor (Threaded)



| Product Number | Material | Part Weight | Max. Load    |
|----------------|----------|-------------|--------------|
| CHL—P25AL      | Aluminum | 106g        | 45Kg / 99Lbs |

### J-type Adaptor For Socket(Pediatric)



| Product Number | Material        | Part Weight | Max. Load      |
|----------------|-----------------|-------------|----------------|
| CHL—34MS       | Casting S.Steel | 115g        | 100Kg / 220Lbs |

### J-type Adaptor For Hip(Pediatric)

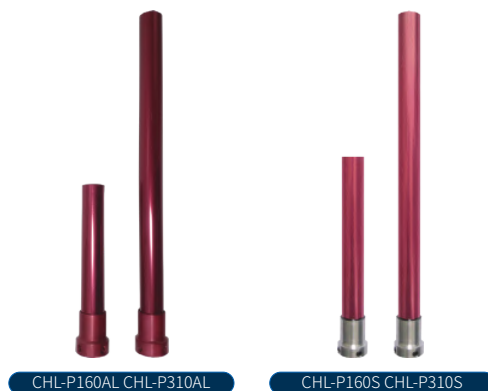


| Product Number | Material | Part Weight | Max. Load      |
|----------------|----------|-------------|----------------|
| CHL—35S        | S.Steel  | 189g        | 100Kg / 220Lbs |



## Pylon Adaptor (Pediatric)

The CHL-P310/P160 Tube Adaptor is designed for use with the CHL-P09 Foot Adaptor and is suitable for use in transfemoral and transtibial prostheses both below and above the knee joint.



| Product Number | Material | Specification | Part Weight | Max. Load  |
|----------------|----------|---------------|-------------|------------|
| CHL—P310S      | S.Steel  | 310mm         | 173g        | 45Kg/99lbs |
| CHL—P160S      |          | 160mm         | 113g        |            |
| CHL—P310AL     | Aluminum | 310mm         | 132g        |            |
| CHL—P160AL     |          | 160mm         | 85g         |            |

## Pylon(pediatric)



| Product Number | Material | Specification | Part Weight | Max. Load  |
|----------------|----------|---------------|-------------|------------|
| CHL—300AL      | Aluminum | 300mm         | 107g        | 45Kg/99lbs |
| CHL—150AL      |          | 150mm         | 48g         |            |

### Four Bar Knee Joint With Tube Clamp (Pediatric)

The 4P15AL knee joint is a polycentric knee that is best suited to be used for low functional level and high need for safety. The frame construction is made of superlight Aluminum and the 4-bar linkage is made of aircraft alloy(AA7075).

| Product Number | Material     |
|----------------|--------------|
| 4P15AL         | Aluminum     |
| Part Weight    | Max. Load    |
| 300g           | 45Kg / 99Lbs |



### Four Bar Knee Disarticulation (Pediatric)

| Product Number | Material     |
|----------------|--------------|
| 4P16AL         | Aluminum     |
| Part Weight    | Max. Load    |
| 372g           | 45Kg / 99Lbs |



### Four Bar Hip Joint (Pediatric)

| Product Number | Material   |
|----------------|------------|
| 3R17C          | Aluminum   |
| Part Weight    | Max. Load  |
| 385g           | 45Kg/99lbs |



### Drop Lock Orthotic Knee Joint(Pediatric)



| Product Number | Material | Specification | Part Weight | Max. Load  |
|----------------|----------|---------------|-------------|------------|
| DL-13S         | S.Steel  | (4mm*13mm)    | 700g        | 45Kg/99lbs |
| DL-13AL        | Aluminum | (5mm*13mm)    | 580g        | 45Kg/99lbs |

**Pediatric AK Cosmetic Cover (EVA) MESH**



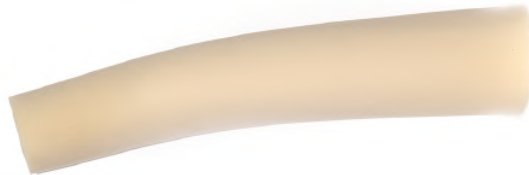
| Product Number | Material | Length | Max. Load    |
|----------------|----------|--------|--------------|
| L3R2           | EVA      | 65cm   | 45Kg / 99Lbs |

**Pediatric BK Cosmetic Cover**



| Product Number | Material | Length | Max. Load    |
|----------------|----------|--------|--------------|
| S3R3           | EVA      | 34cm   | 45Kg / 99Lbs |

**Pediatric AK Foam Cover (Reinforced)**



| Product Number | Material | Length | Max. Load    |
|----------------|----------|--------|--------------|
| L1R2           | EVA      | 65cm   | 45Kg / 99Lbs |

**Pediatric BK Foam Cover (Reinforced)**



| Product Number | Material | Length | Max. Load    |
|----------------|----------|--------|--------------|
| L1R3           | EVA      | 34cm   | 45Kg / 99Lbs |



## ORTHOTIC MATERIAL FOR UPPER/LOWER LIMB

### AK Cosmetic Foam Cover



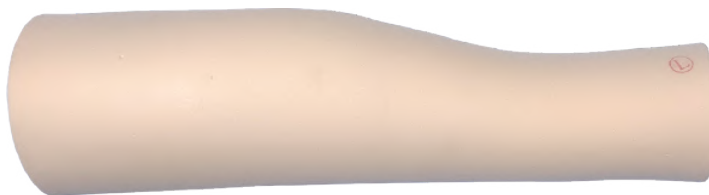
| Product Number | Material | Part Weight |
|----------------|----------|-------------|
| 6R18—AK        | PU       | 750g        |

### BK Cosmetic Foam Cover



| Product Number | Material | Part Weight |
|----------------|----------|-------------|
| 6R18—BK        | PU       | 320g        |

### Pre-Shaped BK Cosmetic Cover



| Product Number | Material | Length | Part Weight |
|----------------|----------|--------|-------------|
| S2R2(S)        | EVA      | 44cm   | 125g        |
| S2R2(M)        |          | 45cm   | 130g        |
| S2R2(L)        |          | 36cm   | 135g        |

### BK Cover(Pyramidal)



| Product Number | Material | Part Weight |
|----------------|----------|-------------|
| S2R3           | EVA      | 400g        |

### AK Cosmetic Cover (EVA) MESH



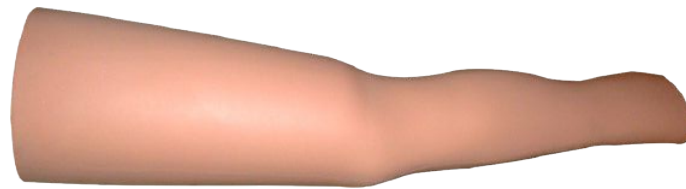
| Product Number | Material | Length | Part Weight |
|----------------|----------|--------|-------------|
| L2R1(S)        | EVA      | 80cm   | 300g        |
| L2R1(M)        |          | 83cm   | 300g        |
| L2R1(L)        |          | 85cm   | 300g        |

### Pre-Shaped AK Foam Cover



| Product Number | Material | Length  | Part Weight |
|----------------|----------|---------|-------------|
| 6R19S          | PU       | 83cm(S) | 450g        |
| 6R19M          |          | 85cm(M) |             |
| 6R19L          |          | 88cm(L) |             |

**AK Cover**



| Product Number | Material | Length  | Part Weight |
|----------------|----------|---------|-------------|
| 6R20S          | PU       | 83cm(S) | 450g        |
| 6R20M          |          | 85cm(M) |             |
| 6R20L          |          | 88cm(L) |             |

**Cylindrical AK Foam Cover (Reinforced)**



| Product Number | Material | Specification       | Part Weight |
|----------------|----------|---------------------|-------------|
| L3R1           | PU       | 85cm(bend/straight) | 400g        |

**Cylindrical BK Foam Cover (Reinforced)**



| Product Number | Material | Specification | Part Weight |
|----------------|----------|---------------|-------------|
| L1R1           | PU       | 43cm          | 230g        |

### upper Arm Foam Cover (Reinforced)



| Product Number | Material | Specification | Part Weight |
|----------------|----------|---------------|-------------|
| U1             | PU       | 50cm          | 130g        |

### Cosmetic Stocking for AK/BK



| Product Number | Material | Specification | Part Weight |
|----------------|----------|---------------|-------------|
| S1-AK          | velutum  | 50cm          | 38g         |
| S1-BK          | velutum  | 35cm          | 22g         |

### Stump Sock



| Product Number | Material | Length | Part Weight |
|----------------|----------|--------|-------------|
| S2-30          | Cotton   | 30cm   | 53g         |
| S2-40          | Cotton   | 40cm   | 60g         |
| S2-50          | Cotton   | 50cm   | 74g         |

### Carbon Fiber foot Socks



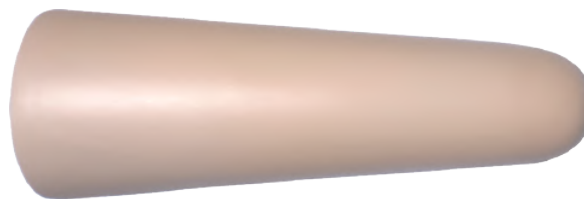
| Product Number | Material    | Color | Specification |
|----------------|-------------|-------|---------------|
| CS—L01W        | Glass Fiber | White | Low Waist     |
| CS—H01W        |             |       | High Waist    |
| CS—L01B        |             | Black | Low Waist     |
| CS—H01B        |             |       | High Waist    |

### EasyFit Donning Bag

| Product Number | Specification      |
|----------------|--------------------|
| EF—XS          | C1(40cm)C2(12cm)   |
| EF—S           | C1(45cm)C2(13cm)   |
| EF—M           | C1(58cm)C2(13cm)   |
| EF—L           | C1(70cm)C2(15.5cm) |
| EF—XL          | C1(80cm)C2(16cm)   |
| EF—XXL         | C1(81cm)C2(17cm)   |
| EF—XXXL        | C1(40cm)C2(12cm)   |
| EF—UZ          | Customized         |



### Thermoformable Cone For BK Liner



| Product Number | Material | Specification |
|----------------|----------|---------------|
| S2C1—S         | EVA      | L42cm*D13cm   |
| S2C1—M         |          | L43cm*D15cm   |
| S2C1—L         |          | L45cm*D17cm   |

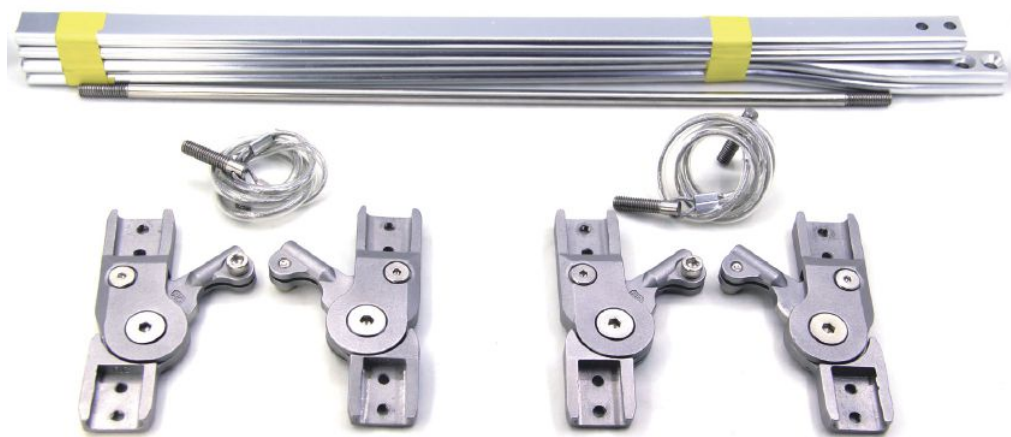
## ORTHOTIC KNEE JOINTS

### Cable-controlled Spring Relocating Lock Knee Joint



| Product Number | Material | Part Weight | Specification | Max Load       |
|----------------|----------|-------------|---------------|----------------|
| CSL-17S        | S.Steel  | 850g        | 4mm*17mm      | 100Kg / 220Lbs |
| CSL-19S        |          | 1000g       | 4mm*19mm      | 100Kg / 220Lbs |
| CSL-17AL       | Aluminum | 600g        | 6mm*17mm      | 100Kg / 220Lbs |
| CSL-19AL       |          | 850g        | 6mm*19mm      | 100Kg / 220Lbs |

### Swiss Lock Knee Joint



| Product Number | Material | Part Weight | Specification       | Max. Load     |
|----------------|----------|-------------|---------------------|---------------|
| CSL-19NLT      | Aluminum | 850g        | Left Side 6mm*19mm  | 100Kg/ 220Lbs |
| CSL-19NRT      |          |             | Right Side 6mm*19mm |               |

### Drop Lock Orthotic Knee Joint



| Product Number | Material | Specification | Part Weight | Max. Load      |
|----------------|----------|---------------|-------------|----------------|
| DL-17S         | S.Steel  | (4mm*17mm)    | 1200g       | 100Kg / 220Lbs |
| DL-19S         | S.Steel  | (4mm*19mm)    | 1400g       |                |
| DL-17AL        | Aluminum | (6mm*17mm)    | 700g        |                |
| DL-19AL        | Aluminum | (6mm*19mm)    | 800g        |                |

### Orthotic Ankle Joint



| Product Number | Material | Part Weight | Specification     |
|----------------|----------|-------------|-------------------|
| AJ-S           | S.Steel  | 50g         | Adult             |
| AJ-PA          | Plastic  | 22g         | Adult / Pediatric |

### Leather Belt for AK Socket



| Product Number | Material   | Specification               | Part Weight |
|----------------|------------|-----------------------------|-------------|
| HKB-AK         | Cattlehide | For Above Knee Socket Using | 150g        |

### Leather Belt for BK Socket



| Product Number | Material   | Specification               | Part Weight |
|----------------|------------|-----------------------------|-------------|
| HKB—BK         | Cattlehide | For Below Knee Socket Using | 100g        |

### Suspension Belt



| Product Number | Material       | Hip Circumference | Hip Circumference |
|----------------|----------------|-------------------|-------------------|
| SPL—S          | Elastic Fabric | 60 - 74 cm        | 36 - 40 cm        |
| SPR—S          |                |                   |                   |
| SPL—M          |                | 66 - 80 cm        | 40 - 44 cm        |
| SPR—M          |                |                   |                   |
| SPL—L          |                | 76 - 90 cm        | 44 - 48 cm        |
| SPR—L          |                |                   |                   |
| SPL—XL         |                | 86 - 100 cm       | 48 - 52 cm        |
| SPR—XL         |                |                   |                   |
| SPL—XXL        |                | 96 - 110 cm       | 52 - 56 cm        |
| SPR—XXL        |                |                   |                   |
| SPL—XXXL       |                | 106 - 120 cm      | 56 - 60 cm        |
| SPR—XXXL       |                |                   |                   |



**SACH Foot Protection Cap**



| Product Number | Material | Part Weight |
|----------------|----------|-------------|
| SC-01          | Plastic  | 20g         |

**Two Hole Foot Protection Cap**



| Product Number | Material | Part Weight |
|----------------|----------|-------------|
| AJ-01          | Plastic  | 20g         |

## ORTHOTIC BRACE

### Night Splint



| Product Number | Specification |
|----------------|---------------|
| HK02S          | Small         |
| HK02M          | Medium        |
| HK02L          | Large         |

### ROM Airliner Walker (angle adjustable)



| Product Number | Specification |
|----------------|---------------|
| HK06S          | Small         |
| HK06M          | Medium        |
| HK06L          | Large         |

### Ankle Airliner Walker(angle adjustable)



| Product Number | Specification |
|----------------|---------------|
| HK07S          | Small         |
| HK07M          | Medium        |
| HK07L          | Large         |

### AFO--Ankle Foot Orthoses



| Product Number | Specification |
|----------------|---------------|
| HK07S—Lt       | Small         |
| HK07S—Rt       |               |
| HK07L—Lt       | Large         |
| HK07L—Rt       |               |

### Philadelphia Cervical Collar



| Product Number | Specification |
|----------------|---------------|
| HK11S          | Small         |
| HK11M          | Medium        |
| HK11L          | Large         |

### Foam Cervical Collar



| Product Number | Specification |
|----------------|---------------|
| HK12S          | Small         |
| HK12M          | Medium        |
| HK12L          | Large         |

### PP Cervical Collar



| Product Number | Specification |
|----------------|---------------|
| HK1201S        | Small         |
| HK1201M        | Medium        |
| HK1201L        | Large         |

### CL Telescopic Knee Brace



| Product Number | Specification |
|----------------|---------------|
| HK29L          | Left          |
| HK29R          | Right         |

**TW Telescopic Knee Brace**



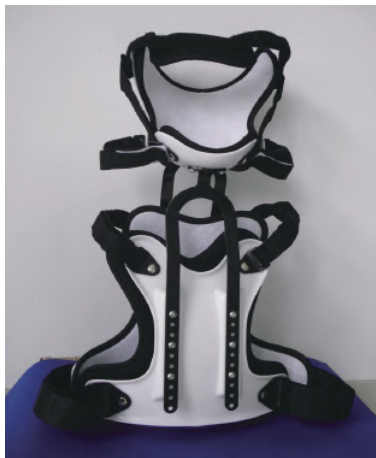
| Product Number | Specification |
|----------------|---------------|
| HK30           | Universal     |

**OA Knee Brace**



| Product Number | Specification |
|----------------|---------------|
| HK31L          | Left          |
| HK31R          | Right         |

**Cervical Thoracic Orthosis**



| Product Number | Specification |
|----------------|---------------|
| HK35           | Universal     |

**Low Jacket Brace Circ Adjustable**



| Product Number | Specification |
|----------------|---------------|
| HK37L          | Universal     |

### High Jacket Brace Circ Adjustable



| Product Number | Specification |
|----------------|---------------|
| HK37H          | Universal     |

### Jewett Brace



| Product Number | Specification |
|----------------|---------------|
| HK41S          | Small         |
| HK41M          | Medium        |
| HK41L          | Large         |

### CL Elbow Support(Angle Adjustable)



| Product Number | Specification |
|----------------|---------------|
| HK49L          | left          |
| HK49R          | Right         |

### TW Elbow Support(Angle Adjustable)



| Product Number | Specification |
|----------------|---------------|
| HK50L          | left          |
| HK50R          | Right         |

## Hinged Hip Abduction Orthosis



| Product Number | Specification |
|----------------|---------------|
| HK64L          | left          |
| HK64R          | Right         |



## PROSTHETICS & ORTHOTICS ACCESSORIES

### Extension Assist

· Work with Knee Joint CHG-01/02



| Product Number | Material | Part Weight |
|----------------|----------|-------------|
| CHF-01         | PU-ABS   | 120g        |

### Socket Attachment Block



| Product Number | Material | Part Weight | Max. Load |
|----------------|----------|-------------|-----------|
| CHF-02         | PU-ABS   | 290g        | 220lbs    |

### Valve With Tube For AK



| Product Number | Material | Part Weight |
|----------------|----------|-------------|
| CHF-03         | plastic  | 35g         |

### 22mm Manual Valve Core



| Product Number | Material | Part Weight |
|----------------|----------|-------------|
| CHF-04         | Rubber   | 35g         |

### 22mm manual Valve Ring



| Product Number | Material | Part Weight |
|----------------|----------|-------------|
| CHF-04R        | Plastic  | 10g         |

### 30mm Automatic Valve Core



| Product Number | Material | Part Weight |
|----------------|----------|-------------|
| CHF-0430       | Rubber   | 45g         |



### 30mm Automatic Valve Ring



| Product Number | Material | Part Weight |
|----------------|----------|-------------|
| CHF—04RA       | Plastic  | 10g         |

### Seat Valve Core



| Product Number | Material | Part Weight |
|----------------|----------|-------------|
| CHF—13         | Plastic  | 10g         |

### Locking Wire For CHG-03



| Product Number | Material | Part Weight |
|----------------|----------|-------------|
| CHF—05         | Steel    | 20g         |

### Locking Wire for K09 Knee Joint



| Product Number | Material | Part Weight |
|----------------|----------|-------------|
| CHF—05R        | Steel    | 20g         |

### Locking Wire for Swiss Lock



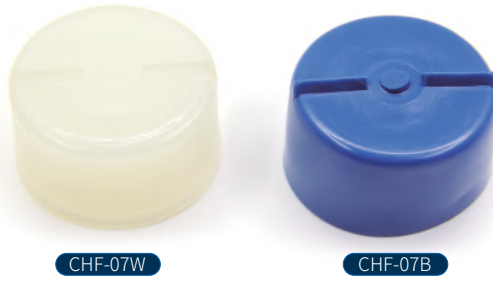
| Product Number | Material | Part Weight |
|----------------|----------|-------------|
| CHF—05SW       | Steel    | 20g         |

### Locking Wire For CHG-01



| Product Number | Material | Part Weight |
|----------------|----------|-------------|
| CHF—06         | S.Steel  | 15g         |

### Lamination Dummy



| Product Number | Material | Part Weight |
|----------------|----------|-------------|
| CHF-07B        | Plastic  | 20g         |
| CHF-07W        | PU       | 30g         |

### Bumper For CHG-10/11



| Product Number | Material      | Part Weight |
|----------------|---------------|-------------|
| CHF-08B        | Rubber(Black) | 22g         |
| CHF-08R        | Rubber(Red)   | 22g         |

### Allen Key for CHG-05/CHG-06



| Product Number | Material | Part Weight |
|----------------|----------|-------------|
| CHF-KY         | S.Steel  | 22g         |

**INK Pencil**



| Product Number | color      | Unit |
|----------------|------------|------|
| CHF—12         | customized | pcs  |

**Plastic Pad For Two Hole Foot**



| Product Number | Material | Part Weight |
|----------------|----------|-------------|
| CHF—14         | Plastic  | 10g         |

**Plastic Pad For One Hole Foot**



| Product Number | Material | Part Weight |
|----------------|----------|-------------|
| CHF—15         | Plastic  | 10g         |

**PVA Foil** 



| Product Number | Material | Part Weight | Specification    |
|----------------|----------|-------------|------------------|
| HKC10          | PVA      | 5500g       | (1.1m~1.0m)*50m  |
| HKC20          |          | 11000g      | (1.1m~1.0m)*100m |

**Colorfully Orthotic Transfer Paper** 



| Product Number | Material               | Color | Specification                  |
|----------------|------------------------|-------|--------------------------------|
| P40—COB        | Thermal Transfer Paper | Blue  | 40cm(Width)*30m(length) / Roll |
| P40—COG        |                        | Green |                                |
| P40—COP        |                        | Pink  |                                |
| P40—COR        |                        | Red   |                                |
| P40—COGY       |                        | Gray  |                                |

**Carbon Fiber Pattern Transfer Paper** 



| Product Number | Material               | Color | Specification                  |
|----------------|------------------------|-------|--------------------------------|
| P40—CB         | Thermal Transfer Paper | Black | 40cm(Width)*30m(length) / Roll |
| P40—B          |                        | Blue  |                                |
| P40—P          |                        | Pink  |                                |
| P40—G          |                        | Gray  |                                |

### Camouflage Pattern Transfer Paper



P40-CABY



P40-CARW



P40-CAPY

| Product Number | Material               | Color       | Specification                  |
|----------------|------------------------|-------------|--------------------------------|
| P40—CABY       | Thermal Transfer Paper | Yellow-Blue | 40cm(Width)*30m(length) / Roll |
| P40—CAPY       |                        | Pink-Yellow |                                |
| P40—CARW       |                        | Red-White   |                                |

### Greeting Words Pattern Transfer Paper



| Product Number | Material               | Color | Specification                  |
|----------------|------------------------|-------|--------------------------------|
| P40—GWG        | Thermal Transfer Paper | Green | 40cm(Width)*35m(length) / Roll |
| P40—GWB        |                        | Blue  |                                |
| P40—GWP        |                        | Pink  |                                |

### Trees Pattern Transfer Paper



| Product Number | Material               | Color | Specification                  |
|----------------|------------------------|-------|--------------------------------|
| P40—TBK        | Thermal Transfer Paper | Black | 40cm(Width)*30m(length) / Roll |
| P40—TG         |                        | Green |                                |
| P40—TBE        |                        | Blue  |                                |

### Geometric Figure Transfer Paper



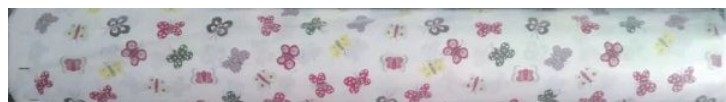
P60—AP

P60—AB

P60—AY

| Product Number | Material               | Color        | Specification                  |
|----------------|------------------------|--------------|--------------------------------|
| P60—AB         | Thermal Transfer Paper | Blue Mixed   | 60cm(Width)*20m(length) / Roll |
| P60—AY         |                        | Yellow Mixed |                                |
| P60—AP         |                        | Pink Mixed   |                                |

### Transfer Paper Butterfly Pattern



| Product Number | Material               | Color | Specification                  |
|----------------|------------------------|-------|--------------------------------|
| P40—CBU        | Thermal Transfer Paper | Pink  | 40cm(Width)*30m(length) / Roll |

### Flowers Pattern Transfer Paper



| Product Number | Material               | Color | Specification                  |
|----------------|------------------------|-------|--------------------------------|
| P40—CFL        | Thermal Transfer Paper | Pink  | 40cm(Width)*30m(length) / Roll |

### Transfer Paper Water Drop Pattern



| Product Number | Material               | Color | Specification                  |
|----------------|------------------------|-------|--------------------------------|
| P60—B          | Thermal Transfer Paper | Blue  | 60cm(Width)*20m(length) / Roll |
| P60—R          |                        | Red   |                                |

### Transfer Paper Cartoon Pattern



P40-SP   P40-DO   P40-FS   P40-BP   P40-ZO   P40-PA   P40-TJ   P40-LX   P40-PAW   P60-HK

| Product Number | Material               | Pattern          | Specification                  |
|----------------|------------------------|------------------|--------------------------------|
| P40—SP         | Thermal Transfer Paper | Spider           | 40cm(Width)*35m(length) / Roll |
| P40—DO         |                        | Doraemon         |                                |
| P40—FS         |                        | Father and Son   |                                |
| P40—BP         |                        | Barbie           |                                |
| P40—ZO         |                        | ZOO              |                                |
| P40—PA         |                        | Peppa            |                                |
| P40—TJ         |                        | Tom and Jerry    |                                |
| P40—LX         |                        | Crayon Shin-chan |                                |
| P40—PAW        |                        | PAW Patrol       |                                |
| P60—HK         |                        | Hello Kity       | 60cm(Width)*35m(length) / Roll |



## Carbon Fiber Cloth



| Product Number | Material     | Specification        |
|----------------|--------------|----------------------|
| RCF—02         | Carbon Fiber | Width(1M)*Length(1M) |

## PVA Sleeve



| Product Number | Material | Specification(L*D1*D2) |
|----------------|----------|------------------------|
| VBK            | PVA      | 700mm*190mm*50mm       |
| VAK            |          | 700mm*270mm*40mm       |
| VBK10          |          | 1000mm*190mm*50mm      |
| VAK10          |          | 1000mm*260mm*50mm      |
| U1             |          | 600mm*130mm*40mm       |
| K1             |          | 1000mm*450mm*50mm      |

**Velcro(Hook & Hair)**



| Product Number | Features      | Color | Specification |
|----------------|---------------|-------|---------------|
| RC-25HW        | Hook          | White | 25mm*25m      |
| RC-38HW        |               |       | 38mm*25m      |
| RC-50HW        |               |       | 50mm*25m      |
| RCT-25W        | Hook and Hair |       | 25mm*25m      |
| RCT-38W        |               |       | 38mm*25m      |
| RCT-50W        |               |       | 50mm*25m      |
| RC-25RB        | Hair          | Black | 25mm*25m      |
| RC-38RB        |               |       | 38mm*25m      |
| RC-50RB        |               |       | 50mm*25m      |
| RCT-25B        | Hook and Hair |       | 25mm*25m      |
| RCT-38B        |               |       | 38mm*25m      |
| RCT-50B        |               |       | 50mm*25m      |



## Velcro Clasp



| Product Number | Color      | Specification |
|----------------|------------|---------------|
| RCA—25W        | White      | 25mm          |
| RCA—38W        |            | 38mm          |
| RCA—25K        | Black      | 25mm          |
| RCA—38K        |            | 38mm          |
| RCA—25F        | Fresh      | 25mm          |
| RCA—38F        |            | 38mm          |
| RCA—25P        | Pink       | 25mm          |
| RCA—38P        |            | 38mm          |
| RCA—25O        | Orange     | 25mm          |
| RCA—38O        |            | 38mm          |
| RCA—25Y        | Yellow     | 25mm          |
| RCA—38Y        |            | 38mm          |
| RCA—25G        | Green      | 25mm          |
| RCA—38G        |            | 38mm          |
| RCA—25LB       | Light Blue | 25mm          |
| RCA—38LB       |            | 38mm          |
| RCA—25E        | Blue       | 25mm          |
| RCA—38E        |            | 38mm          |



| Product Number | Color | Specification |
|----------------|-------|---------------|
| VP25W          | White | 25mm          |
| VP38W          |       | 38mm          |
| VP50W          |       | 50mm          |
| VP25B          | Black | 25mm          |
| VP38B          |       | 38mm          |
| VP50B          |       | 50mm          |

Cotton Tape



| Product Number | Color      | Specification |
|----------------|------------|---------------|
| RCB—25W        | White      | 25mm          |
| RCB—38W        |            | 38mm          |
| RCB—25K        | Black      | 25mm          |
| RCB—38K        |            | 38mm          |
| RCB—25F        | Fresh      | 25mm          |
| RCB—38F        |            | 38mm          |
| RCB—25P        | Pink       | 25mm          |
| RCB—38P        |            | 38mm          |
| RCB—25O        | Orange     | 25mm          |
| RCB—38O        |            | 38mm          |
| RCB—25Y        | Yellow     | 25mm          |
| RCB—38Y        |            | 38mm          |
| RCB—25G        | Green      | 25mm          |
| RCB—38G        |            | 38mm          |
| RCB—25LB       | Light Blue | 25mm          |
| RCB—38LB       |            | 38mm          |
| RCB—25E        | Blue       | 25mm          |
| RCB—38E        |            | 38mm          |

### Carbon fiber Stockinettes



| Product Number | Material     | Width | Specification        |
|----------------|--------------|-------|----------------------|
| RCF—09         | Carbon Fiber | 9cm   | Per meter (25m/Roll) |

### Cotton Stockinettes



| Product Number | Material | Width | Specification |
|----------------|----------|-------|---------------|
| RCS—5          | Cotton   | 5cm   | 1Kg / Roll    |
| RCS—7.5        |          | 7.5cm |               |
| RCS—10         |          | 10cm  |               |
| RCS—15         |          | 15cm  |               |
| RCS—23         |          | 23cm  |               |
| RCS—25         | Cotton   | 25cm  | 2Kg / Roll    |
| RCS—30         |          | 30cm  |               |

## Polypropylene Stockinettes



| Product Number | Material      | Width | Specification |
|----------------|---------------|-------|---------------|
| RCD—5          | polypropylene | 5cm   | 1Kg / Roll    |
| RCD—7.5        |               | 7.5cm |               |
| RCD—10         |               | 10cm  |               |
| RCD—15         |               | 15cm  |               |
| RCD—23         |               | 23cm  | 2Kg / Roll    |
| RCD—25         |               | 25cm  |               |
| RCD—30         |               | 30cm  |               |

## Glass Fiber Stockinettes



| Product Number | Material    | Width | Specification |
|----------------|-------------|-------|---------------|
| RCD—9          | Glass Fiber | 9cm   | 2Kg / Roll    |
| RCD—13         |             | 13cm  |               |
| RCD—18         |             | 18cm  |               |

## FOOT / FOOT CARE

### SACH Foot



| Product Number | Material     | Specification | Color | Max. Load |
|----------------|--------------|---------------|-------|-----------|
| FJ01           | Polyurethane | 14CM-30CM     | Flesh | 220Lbs    |
| FJ01B          | Polyurethane | 15CM-30CM     | Brown | 220Lbs    |

### Single Axis Foot(one hole fixed)



| Product Number | Material     | Specification | Max. Load |
|----------------|--------------|---------------|-----------|
| FJ02           | Polyurethane | 21CM-27CM     | 220lbs    |

**Double Axis Foot(two hole fixed)**



| Product Number | Material     | Specification | Max. Load |
|----------------|--------------|---------------|-----------|
| FJ03           | Polyurethane | 21CM-30CM     | 220lbs    |

**Dynamic Foot E2000**



| Product Number | Material     | Specification | Max. Load |
|----------------|--------------|---------------|-----------|
| E2000—S        | Polyurethane | 22CM-27CM     | 220lbs    |
| E2000—T        | Polyurethane | 22CM-27CM     | 220lbs    |



## Foot Shell



WK-01/WK-02

| Product Number | Material     | Specification             | Max. Load |
|----------------|--------------|---------------------------|-----------|
| WK-01          | Polyurethane | 22cm-27cm                 | 220bs     |
| WK-02          | Polyurethane | 22cm-27cm FOR WKT-01 only | 220bs     |

## Carbon Fiber Dynamic Foot



WKT-01L



WKT-01H

Notice: One case include 1pcs of carbon fiber foot and 1pcs socks

| Product Number | Material     | Waist      | Specification                 | Max. Load     |
|----------------|--------------|------------|-------------------------------|---------------|
| WKT-01H        | Carbon Fiber | High Waist | Size: 22cm-27cm               | 100Kg/ 220Lbs |
| WKT-01L        |              | Low Waist  | Body Weight Match: 60kg~100Kg |               |

## Easy Walk carbon Fiber Dynamic Foot



EZK-01L



EZK-01H

Notice: One case include 1pcs of carbon fiber foot and 1pcs socks

| Product Number | Material     | Waist      | Specification                 | Max. Load     |
|----------------|--------------|------------|-------------------------------|---------------|
| EZK-01H        | Carbon Fiber | High Waist | Size: 22cm-27cm               | 100Kg/ 220Lbs |
| EZK-01L        |              | Low Waist  | Body Weight Match: 60kg~100Kg |               |

## Carbon Fiber Footplates



Notice: One case include 1pcs of carbon fiber foot and 1pcs socks

| Product Number | Material     | Waist     | Specification                                    | Max. Load     |
|----------------|--------------|-----------|--|---------------|
| SM-01          | Carbon Fiber | NON       | Size: 22cm-27cm<br>Body Weight Match: 60kg~100Kg | 100Kg/ 220Lbs |
| SM-02          |              | Receiver  |  |               |
| SM-03          |              | Pyramidal |  |               |



## SILICONE PRODUCTS

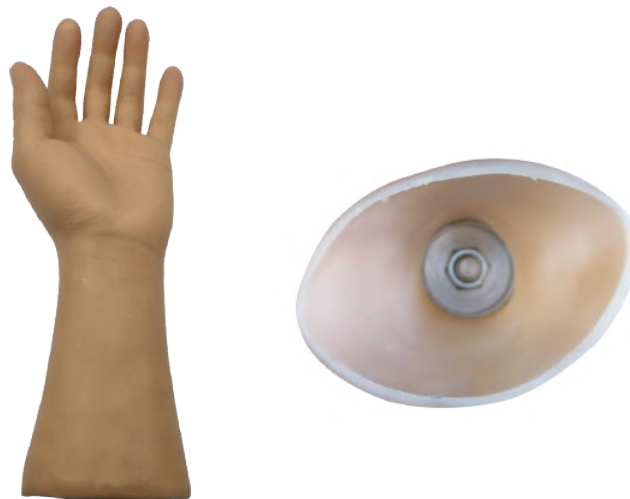
### Silicon Glove For Functional Hand



Notice: Silicone Material Guarantee for 6 Month.

| Product Number | Material | Guarantee      | Specification  | Color No. |
|----------------|----------|----------------|--|-----------|
| JD—01          | Silicone | 6 Month(Short) | Size: S / M / L<br>Sex: Male / Female<br>Orientation: Left / Right | BSP1-18   |
| JD—02          |          | 6 Month(Long)  |  |           |

### Customized Cosmetic silicone Glove (Threaded)



Notice: Silicone Material Guarantee for 6 Month.

| Product Number | Material | Guarantee      | Specification  | Color No. |
|----------------|----------|----------------|--|-----------|
| JD—03S         | Silicone | 6 Month(Short) | Size: According to Measurement<br>Length: from the wrist up to 14cm<br>Sex: Male / Female<br>Orientation: Left / Right | BSP1-18   |
| JD—03L         |          | 6 Month(Long)  |  |           |

### Silicon Finger



Notice: Silicone Material Guarantee for 6 Month.

| Product Number | Material | Guarantee | Specification   | Color No. |
|----------------|----------|-----------|---|-----------|
| JD-04          | Silicone | 6 Month   | Size: According to Measurement<br>Sex: Male / Female<br>Orientation: Left / Right | BSP1-18   |

### Cosmetic Silicone Glove With Zipper( Finished type)



Notice: Silicone Material Guarantee for 6 Month.

| Product Number | Material | Guarantee | Specification   | Color No. |
|----------------|----------|-----------|---|-----------|
| JD-05          | Silicone | 6 Month   | Size: S / M / L / XL<br>Sex: Male / Female<br>Orientation: Left / Right | BSP1-18   |

### Cosmetic Silicone Glove With Zipper ( Customized)



Notice: Silicone Material Guarantee for 6 Month.

| Product Number | Material | Guarantee      | Specification  | Color No. |
|----------------|----------|----------------|--|-----------|
| JD—06S         | Silicone | 6 Month(Short) | Size: according to Measurement<br>Length: from the wrist up to 3cm<br>Sex: Male / Female<br>Orientation: Left / Right  | BSP1-18   |
| JD—06L         |          | 6 Month(Long)  | Size: according to Measurement<br>Length: from the wrist up to 10cm<br>Sex: Male / Female<br>Orientation: Left / Right |           |

### Silicon Foot With Zipper(CUSTOMIZED)



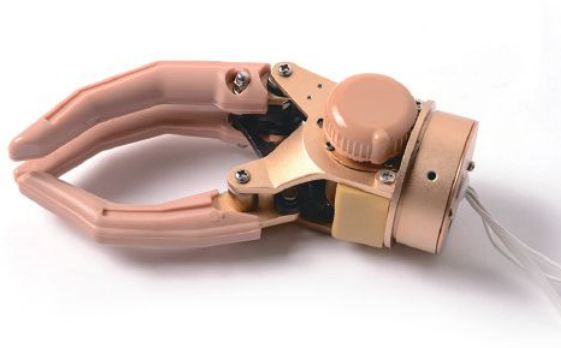
Notice: Silicone Material Guarantee for 6 Month.

| Product Number | Material                                   | Guarantee | Specification  | Color No. |
|----------------|--|-----------|--|-----------|
| JD—07          | Silicone                                   | 6 Month   | Size: according to Measurement<br>Sex: Male / Female<br>Orientation: Left / Right                              | BSP1-18   |
| JD—07CF        | Silicone<br>Carbon Fiber Pad<br>reinforced | 6 Month   | Carbon Fiber pad build In<br>Size: according to Measurement<br>Sex: Male / Female<br>Orientation: Left / Right |           |

## UPPER LIMB PRODUCTS

### Myoelectric Arm Prostheses For Wrist Disarticulation

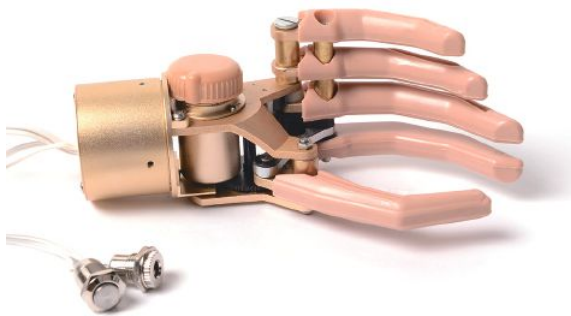
1. actions of fingers are controlled by MYOelectricity.
2. Wrist Joint can rotate passively
3. Three/ five fingers with short Glove, one charger and two lithium batteries
4. extra option: two-dimensional finctions / water - resist



HKM-W3 (ALuminium)



CFM-W3 (Carbon Fiber)



HKM-W5 (ALuminium)



CFM-W5 (Carbon Fiber)

| Product Number | Material     | Specification | Hand Length | weight |
|----------------|--------------|---------------|-------------|--------|
| HKM—W3         | ALuminium    | Three Fingers | S:123mm     | 260g   |
| HKM—W5         | ALuminium    | Five Fingers  | L:129mm     | 265g   |
| CFM—W3         | Carbon Fiber | Three Fingers | S:123mm     | 260g   |
| CFM—W5         | Carbon Fiber | Five Fingers  | L:129mm     | 265g   |

## Prostheses Disarticulation

1. actions of fingers are controlled by MYOelectricity.
2. Wrist Joint can rotate passively
3. Three/ five fingers with short Glove, one charger and two lithium batteries
4. extra option: two-dimensional finctions / water - resist



| Product Number | Material     | Specification | Hand Length                   | weight |
|----------------|--------------|---------------|-------------------------------|--------|
| HKM—F3         | ALuminium    | Three Fingers | S:128mm<br>M:134mm<br>L:143mm | 270g   |
| HKM—F5         | ALuminium    | Five Fingers  |                               |        |
| CFM—F3         | Carbon Fiber | Three Fingers |                               | 280g   |
| CFM—F5         | Carbon Fiber | Five Fingers  |                               |        |

### Myoelectric Arm Prostheses For BE(With Built-in Battery)

- 1.actions of fingers are controlled by MYOelectricity.
- 2.battery is Hidden in the wrist joints
- 3.Wrist Joint can rotate passively
- 4.Three/ five fingers with short Glove, one charger and two lithium batteries
- 5.extra option: two-dimensional finctions / water - resist



| Product Number | Material  | Specification | Hand Length        | weight       |
|----------------|-----------|---------------|--------------------|--------------|
| HKM—I3         | ALuminium | Three Fingers | S:142mm            | 300g         |
| HKM—I5         | ALuminium | Five Fingers  | M:152mm<br>L:161mm | 310g<br>320g |

### Myoelectric Arm Prostheses( Wrist Universal Rotate 360° )

- 1.actions of fingers are controlled by MYOelectricity.
- 2.The wrist can be rotated in 360 degrees and the motion range for ±30 degrees
- 3.Three/ five fingers with short Glove, one charger and two lithium batteries
- 4.extra option: two-dimensional finctions / water - resist



| Product Number | Material  | Specification | Hand Length        | weight       |
|----------------|-----------|---------------|--------------------|--------------|
| HKM—U3         | ALuminium | Three Fingers | S:152mm            | 340g         |
| HKM—U5         | ALuminium | Five Fingers  | M:157mm<br>L:162mm | 350g<br>360g |



## Myoelectric Arm Prostheses For Elbow Disarticulation (Two-Motion Freedom)

- 1.Actions of hand and elbow are controlled by myoelectricity.
- 2.Wrist joint can be rotated passively
- 3.Passive changeover switch is added in case of myoelectric switch failures.
- 4.Suitable for A/E middle, short stump and shoulder disarticulation.
- 5.Three/ five fingers with short Glove, one charger and two lithium batteries
- 6.extra option: two-dimensional functions / water - resist



| Product Number | Material     | Specification | size   |
|----------------|--------------|---------------|--|
| HKM—T3         | ALuminium    | Three Fingers | S: 33.8cm-27.3cm<br>M:34.4cm-27.9cm<br>L:35.3cm-28.9cm |
| HKM—T5         | ALuminium    | Five Fingers  |  |
| CFM—T3         | Carbon Fiber | Three Fingers |  |
| CFM—T5         | Carbon Fiber | Three Fingers |  |

## Myoelectric Arm Prostheses For AE(Two-motion Freedom)

- 1.Actions of hand and elbow are controlled by myoelectricity.
- 2.Wrist joint can be rotated passively
- 3.Passive changeover switch is added in case of myoelectric switch failures.
- 4.Suitable for A/E middle, short stump and shoulder disarticulation.
- 5.Three/ five fingers with short Glove, one charger and two lithium batteries
- 6.extra option: two-dimensional finctions / water - resist



| Product Number | Material     | Specification | size   |
|----------------|--------------|---------------|--|
| HKM—A3         | ALuminium    | Three Fingers | S: 33.8cm-27.3cm<br>M:34.4cm-27.9cm<br>L:35.3cm-28.9cm |
| HKM—A5         | ALuminium    | Five Fingers  |  |
| CFM—A3         | Carbon Fiber | Three Fingers |  |
| CFM—A5         | Carbon Fiber | Three Fingers |  |

## Cosmetic Hand

1. actions of fingers are controlled by moving thumb
2. Wrist Joint can be rotated passively
3. Three/ five fingers with short Glove



| Product Number | Material  | Specification | size  |
|----------------|-----------|---------------|-------|
| HKM—M3         | ALuminium | Three Fingers | 128mm |
| HKM—M5         | ALuminium | Five Fingers  |       |

## Cosmetic Hand With Connector

1. actions of fingers are controlled by moving thumb
2. Wrist Joint can be rotated passively
3. Three/ five fingers with short Glove



| Product Number | Material  | Specification | size  |
|----------------|-----------|---------------|-------|
| HKM—C3         | ALuminium | Three Fingers | 128mm |
| HKM—C5         | ALuminium | Five Fingers  |       |

### Cosmetic Hand For Elbow Disarticulation

- 1.actions of fingers are controlled by moving thumb
- 2.Wrist Joint can be rotated passively
- 3.poke elbow handle joint can make the elbow joint passively extend and flex.
4. Three/ five fingers with short Glove



| Product Number | Material  | Specification | size  |
|----------------|-----------|---------------|-------|
| HKM—D3         | ALuminium | Three Fingers | 128mm |
| HKM—D5         | ALuminium | Five Fingers  |       |

### Arm Skeleton For Elbow Disarticulation

- 1.work with hand glove(inner bolt)
- 2.poke elbow handle joint can make the elbow joint passively extend and flex.



| Product Number | Material  | Specification | weight |
|----------------|-----------|---------------|--------|
| HKM—A1         | ALuminium | 470mm         | 424g   |

## Cosmetics Prostheses For AE

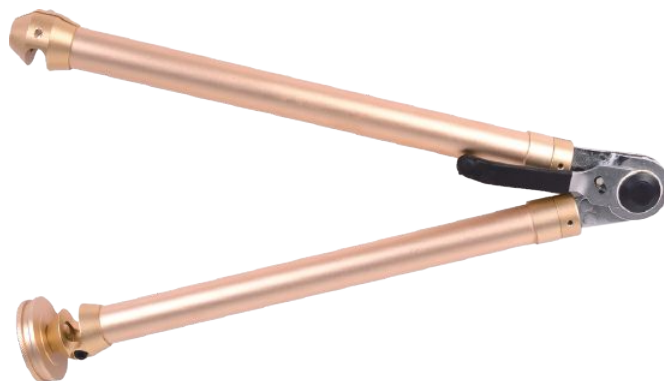
1. actions of fingers are controlled by moving thumb
2. Wrist Joint can rotate passively
3. poke elbow handle joint can make the elbow joint passively extend and flex.
4. Three/ five fingers with short Glove



| Product Number | Material  | Specification | Length |
|----------------|-----------|---------------|--------|
| HKM—AE3        | ALuminium | Three Fingers | 750mm  |
| HKM—AE5        | ALuminium | Five Fingers  |        |

## Arm Skeleton For AE

1. work with hand glove(inner bolt)
2. poke elbow handle joint can make the elbow joint passively extend and flex.



| Product Number | Material  | Specification | weight |
|----------------|-----------|---------------|--------|
| HKM—A2         | ALuminium | 620mm         | 375g   |

### Cosmetics Prostheses For Shoulder Disarticulation

- 1.actions of fingers are controlled by moving thumb
- 2.Wrist Joint can rotate passively
- 3.poke elbow handle joint can make the elbow joint passively extend and flex.
4. upper arm can freely swing.
5. Three/ five fingers with short Glove



| Product Number | Material  | Specification | size  |
|----------------|-----------|---------------|-------|
| HKM—S3         | ALuminium | Three Fingers | 780mm |
| HKM—S5         | ALuminium | Five Fingers  |       |

### Arm Skeleton For Shoulder Disarticulation

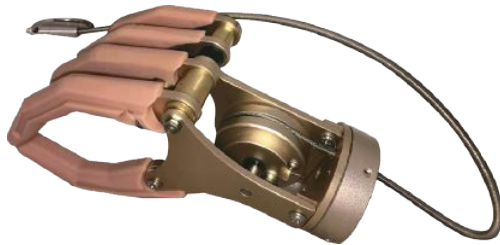
- 1.work with hand glove(inner bolt)
- 2.poke elbow handle joint can make the elbow joint passively extend and flex.



| Product Number | Material  | Specification | weight |
|----------------|-----------|---------------|--------|
| HKM—AS         | ALuminium | 620mm         | 375g   |

## Cable Control Mechanical Hand

- 1. actions of hand is controlled by cable
- 2. Wrist Joint can rotate passively



HKM-L5

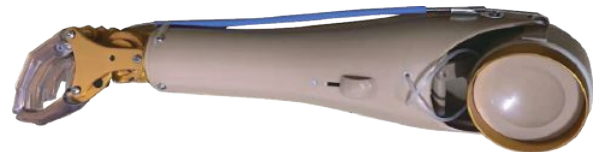


HKM-L3

| Product Number | Material  | Specification | Weight |
|----------------|-----------|---------------|--------|
| HKM-L3         | Aluminium | Three Fingers | 180g   |
| HKM-L5         |           | Five Fingers  | 375g   |

## Cable Control Mechanical For AE

- 1. actions of hand and elbow are controlled by cable
- 2. Wrist Joint can rotate passively
- 3. Upper arm can rotate passively



| Product Number | Material  | Specification | Weight |
|----------------|-----------|---------------|--------|
| HKM-Y3         | Aluminium | Three Fingers | 430g   |
| HKM-Y5         |           | Five Fingers  | 470g   |

## Arm Skeleton For Cable Control Mechanical AE

- 1. work with cable control hand
- 2. Upper arm can rotate passively



| Product Number | Material  | Specification | Weight |
|----------------|-----------|---------------|--------|
| HKM-UC         | Aluminium | 280mm         | 430g   |

## Lithium Batteries



| Product Number | Specification | Voltage |
|----------------|---------------|---------|
| HKM—Li         | 880mah        | 7.4V    |

## Electrode



| Product Number | Specification        | Voltage |
|----------------|----------------------|---------|
| HKM—E1         | Connected with Motor | 7.4V    |

## Electric Switch



| Product Number | Specification        | Voltage |
|----------------|----------------------|---------|
| HKM—S1         | Connected with Motor | 7.4V    |



## Battery Charger



| Product Number | Input Voltage | Output Voltage |
|----------------|---------------|----------------|
| HKM—C1         | 220V          | 7.4V           |

## ALPS LINER

### ALPS ECO LINER

The ALPS ECO Liner features a new distal construction with reduced stretch to control distal distraction. Using less energy to produce, the ECO Liner has a new seamless knitted construction with a modern new look. It is available in a Locking or Cushion Liner with the ALPS HD Gel to provide active amputees with a better degree of control.



| Measurement | Thickness (3mm) |              | Thickness (6mm) |              |
|-------------|-----------------|--------------|-----------------|--------------|
|             | Locking         | Cushion      | Locking         | Cushion      |
| 20cm~23cm   | ECDT(HD)20-3    | ECFR(HD)20-3 | ECDT(HD)20-6    | ECFR(HD)20-6 |
| 24cm~25cm   | ECDT(HD)24-3    | ECFR(HD)24-3 | ECDT(HD)24-6    | ECFR(HD)24-6 |
| 26cm~27cm   | ECDT(HD)26-3    | ECFR(HD)26-3 | ECDT(HD)26-6    | ECFR(HD)26-6 |
| 28cm~31cm   | ECDT(HD)28-3    | ECFR(HD)28-3 | ECDT(HD)28-6    | ECFR(HD)28-6 |
| 32cm~37cm   | ECDT(HD)32-3    | ECFR(HD)32-3 | ECDT(HD)32-6    | ECDT(HD)32-6 |
| 38cm~43cm   | ECDT(HD)38-3    | ECFR(HD)38-3 | ECDT(HD)38-6    | ECFR(HD)38-6 |

### ALPS Extreme Liner

The Extreme Prosthetic Liner was specifically designed to meet the needs of transfemoral and active transtibial amputees. With 80% less vertical stretch than our other gel liners, the AKFR / AKDT is made to withstand the demands of high activity users. Manufactured with ALPS GripGel or High Density Gel, this liner contains properties that have been specially formulated to assist patients with donning and suspension.



| Measurement | Thickness (3mm)       |                       | Thickness (6mm)       |                       |
|-------------|-----------------------|-----------------------|-----------------------|-----------------------|
|             | Locking               | Cushion               | Locking               | Cushion               |
| 16cm~19cm   | AKDT16-3 AKDT(HD)16-3 | AKFR16-3 AKFR(HD)16-3 | AKDT16-6 AKDT(HD)16-6 | AKFR16-6 AKFR(HD)16-6 |
| 20cm~23cm   | AKDT20-3 AKDT(HD)20-3 | AKFR20-3 AKFR(HD)20-3 | AKDT20-6 AKDT(HD)20-6 | AKFR20-6 AKFR(HD)20-6 |
| 24cm~25cm   | AKDT24-3 AKDT(HD)24-3 | AKFR24-3 AKFR(HD)24-3 | AKDT24-6 AKDT(HD)24-6 | AKFR24-6 AKFR(HD)24-6 |
| 26cm~27cm   | AKDT26-3 AKDT(HD)26-3 | AKFR26-3 AKFR(HD)26-3 | AKDT26-6 AKDT(HD)26-6 | AKFR26-6 AKFR(HD)26-6 |
| 28cm~31cm   | AKDT28-3 AKDT(HD)28-3 | AKFR28-3 AKFR(HD)28-3 | AKDT28-6 AKDT(HD)28-6 | AKFR28-6 AKFR(HD)28-6 |
| 32cm~37cm   | AKDT32-3 AKDT(HD)32-3 | AKFR32-3 AKFR(HD)32-3 | AKDT32-6 AKDT(HD)32-6 | AKFR32-6 AKFR(HD)32-6 |
| 38cm~43cm   | AKDT38-3 AKDT(HD)38-3 | AKFR38-3 AKFR(HD)38-3 | AKDT38-6 AKDT(HD)38-6 | AKFR38-6 AKFR(HD)38-6 |
| 44cm~53cm   | AKDT44-3 AKDT(HD)44-3 | AKFR44-3 AKFR(HD)44-3 | AKDT44-6 AKDT(HD)44-6 | AKFR44-6 AKFR(HD)44-6 |

## ALPS Anterior Posterior Tapered Liner

The ALPS AP Tapered Liner is gradually tapered from the anterior to the posterior to provide superior comfort. This liner is available in a pin and lock system or suction suspension. The AP Tapered Liner features our black high performance fabric with HD Gel to assist in reducing bunching in the popliteal region.



| Measurement | Thickness (3mm) |              |
|-------------|-----------------|--------------|
|             | Locking         | Cushion      |
| 20cm~23cm   | APDT20-(6-3)    | AKFR20-(6-3) |
| 24cm~25cm   | APDT24-(6-3)    | AKFR24-(6-3) |
| 26cm~27cm   | APDT26-(6-3)    | AKFR26-(6-3) |
| 28cm~31cm   | APDT28-(6-3)    | AKFR28-(6-3) |
| 32cm~37cm   | APDT32-(6-3)    | AKFR32-(6-3) |

## ALPS General Purpose Liner

The General Purpose GPFR / GPDT is a multipurpose prosthetic liner built to withstand the normal wear-and-tear of daily activities. Its high performance fabric and reinforced seams allow it to be one of the most durable and versatile liners available today. Formulated with ALPS GripGel, the GPFR / GPDT consists of a slightly tacky texture that enables the liner to conform to the user's limb and remain in place without restricting the patient's blood flow.



| Measurement | Thickness (3mm) |          | Thickness (6mm) |          |
|-------------|-----------------|----------|-----------------|----------|
|             | Locking         | Cushion  | Locking         | Cushion  |
| 16cm~19cm   | GPDT16-3        | GPFR16-3 | GPDT16-6        | GPFR16-6 |
| 20cm~23cm   | GPDT20-3        | GPFR20-3 | GPDT20-6        | GPFR20-6 |
| 24cm~25cm   | GPDT24-3        | GPFR24-3 | GPDT24-6        | GPFR24-6 |
| 26cm~27cm   | GPDT26-3        | GPFR26-3 | GPDT26-6        | GPFR26-6 |
| 28cm~31cm   | GPDT28-3        | GPFR28-3 | GPDT28-6        | GPFR28-6 |
| 32cm~37cm   | GPDT32-3        | GPFR32-3 | GPDT32-6        | GPFR32-6 |
| 38cm~43cm   | GPDT38-3        | GPFR38-3 | GPDT38-6        | GPFR38-6 |
| 44cm~53cm   | GPDT44-3        | GPFR44-3 | GPDT44-6        | GPFR44-6 |

## ALPS High Performance Easy Liner

The ALPS Easyliner was specifically designed to help promote optimum skin health for patients. Its unique formulation of ALPS EasyGel contains a special blend of antioxidants that are meant to prevent and repair damage caused by free radicals. This feature makes the Easyliner an ideal choice for diabetics or patients with adherent scar tissue or grafted skin.



| Measurement | Thickness (3mm) |          | Thickness (6mm) |          | Thickness (6mm-3mm) |              |
|-------------|-----------------|----------|-----------------|----------|---------------------|--------------|
|             | Locking         | Cushion  | Locking         | Cushion  | Locking             | Cushion      |
| 16cm~19cm   | ELDT16-3        | ELFR16-3 | ELDT16-6        | ELFR16-6 | ELDT16-(6-3)        | ELFR16-(6-3) |
| 20cm~23cm   | ELDT20-3        | ELFR20-3 | ELDT20-6        | ELFR20-6 | ELDT20-(6-3)        | ELFR20-(6-3) |
| 24cm~25cm   | ELDT24-3        | ELFR24-3 | ELDT24-6        | ELFR24-6 | ELDT24-(6-3)        | ELFR24-(6-3) |
| 26cm~27cm   | ELDT26-3        | ELFR26-3 | ELDT26-6        | ELFR26-6 | ELDT26-(6-3)        | ELFR26-(6-3) |
| 28cm~31cm   | ELDT28-3        | ELFR28-3 | ELDT28-6        | ELFR28-6 | ELDT28-(6-3)        | ELFR28-(6-3) |
| 32cm~37cm   | ELDT32-3        | ELFR32-3 | ELDT32-6        | ELFR32-6 | ELDT32-(6-3)        | ELFR32-(6-3) |
| 38cm~43cm   | ELDT38-3        | ELFR38-3 | ELDT38-6        | ELFR38-6 | ELDT38-(6-3)        | ELFR38-(6-3) |
| 44cm~53cm   | ELDT44-3        | ELFR44-3 | ELDT44-6        | ELFR44-6 | ELDT44-(6-3)        | ELFR44-(6-3) |

## ALPS Easy Liner Super Stretch

The Easyliner Super Stretch Prosthetic Liner is ideal for patients who want the combined softness, strength, and elasticity of the ALPS EasyGel without the restriction of a fabric cover. The ELPX' s super stretch properties enable it to provide users with complete freedom of movement as well as a close fit that won' t restrict blood flow. The EasyGel's smooth texture conforms to the user' s limb for a customized fit.



| Measurement | Thickness (6mm) | Measurement | Thickness (6mm) |
|-------------|-----------------|-------------|-----------------|
|             | Cushion         |             | Cushion         |
| 10cm~15cm   | ELPX-10         | 26cm~27cm   | ELPX-26         |
| 16cm~19cm   | ELPX-16         | 28cm~31cm   | ELPX-28         |
| 20cm~23cm   | ELPX-20         | 32cm~37cm   | ELPX-32         |
| 24cm~25cm   | ELPX-24         | 38cm~43cm   | ELPX-38         |

## ALPS EZ Flex Liner

ALPS EZ Flex Prosthetic Liner maximizes user comfort and increases range of motion with its unique dual fabric combination. The EZF' s anterior side allows patients to experience improved knee flexion with unlimited elasticity while the posterior fabric helps prevent bunching in the popliteal region with 80% less vertical stretch. Manufactured with ALPS EasyGel, the EZ Flex Locking Liner is comprised of antioxidants that help promote optimum skin health by preventing and repairing damage caused by free radicals.



| Measurement | Thickness (3mm) | Thickness (6mm) |
|-------------|-----------------|-----------------|
|             | Locking         | Locking         |
| 16cm~19cm   | EZF16-3         | EZF16-6         |
| 20cm~23cm   | EZF20-3         | EZF20-6         |
| 24cm~25cm   | EZF24-3         | EZF24-6         |
| 26cm~27cm   | EZF26-3         | EZF26-6         |
| 28cm~31cm   | EZF28-3         | EZF28-6         |
| 32cm~37cm   | EZF32-3         | EZF32-6         |
| 38cm~43cm   | EZF38-3         | EZF38-6         |
| 44cm~53cm   | EZF44-3         | EZF44-6         |

## ALPS Proximal Seal Interface Liner

ALPS PSI Liner allows the sleeve to seal on the liner just proximal to the trim lines of a transtibial socket. The fabric cover located distally allows the air to wick out of the prosthesis. ALPS EasyGel helps to relieve the skin of shear forces. The PSI liner can be used in conjunction with current valve suction or vacuum systems being used in the market today.



| Measurement | Thickness (6mm) | Thickness (6mm-3mm) |
|-------------|-----------------|---------------------|
|             | Cushion         | Cushion             |
| 16cm~19cm   | PSI16-6         | PSI16-(6-3)         |
| 20cm~23cm   | PSI20-6         | PSI20-(6-3)         |
| 24cm~25cm   | PSI24-6         | PSI24-(6-3)         |
| 26cm~27cm   | PSI26-6         | PSI26-(6-3)         |
| 28cm~31cm   | PSI28-6         | PSI28-(6-3)         |
| 32cm~37cm   | PSI32-6         | PSI32-(6-3)         |
| 38cm~43cm   | PSI38-6         | PSI38-(6-3)         |
| 44cm~53cm   | PSI44-6         | PSI44-(6-3)         |

## ALPS Superior Performance Gel Liner

The ALPS Superior Performance Liner is ideal for active patients and provides superior comfort with ALPS GripGel or High Density Gel. The SP Liner features a NEW black fabric that allows for additional comfort and stability.



| Measurement | Thickness (3mm)       |                       | Thickness (6mm)       |                       |
|-------------|-----------------------|-----------------------|-----------------------|-----------------------|
|             | Locking               | Cushion               | Locking               | Cushion               |
| 16cm~19cm   | SPDT16-3 SPDT(HD)16-3 | SPFR16-3 SPFR(HD)16-3 | SPDT16-6 SPDT(HD)16-6 | SPFR16-6 SPFR(HD)16-6 |
| 20cm~23cm   | SPDT20-3 SPDT(HD)20-3 | SPFR20-3 SPFR(HD)20-3 | SPDT20-6 SPDT(HD)20-6 | SPFR20-6 SPFR(HD)20-6 |
| 24cm~25cm   | SPDT24-3 SPDT(HD)24-3 | SPFR24-3 SPFR(HD)24-3 | SPDT24-6 SPDT(HD)24-6 | SPFR24-6 SPFR(HD)24-6 |
| 26cm~27cm   | SPDT26-3 SPDT(HD)26-3 | SPFR26-3 SPFR(HD)26-3 | SPDT26-6 SPDT(HD)26-6 | SPFR26-6 SPFR(HD)26-6 |
| 28cm~31cm   | SPDT28-3 SPDT(HD)28-3 | SPFR28-3 SPFR(HD)28-3 | SPDT28-6 SPDT(HD)28-6 | SPFR28-6 SPFR(HD)28-6 |
| 32cm~37cm   | SPDT32-3 SPDT(HD)32-3 | SPFR32-3 SPFR(HD)32-3 | SPDT32-6 SPDT(HD)32-6 | SPFR32-6 SPFR(HD)32-6 |
| 38cm~43cm   | SPDT38-3 SPDT(HD)38-3 | SPFR38-3 SPFR(HD)38-3 | SPDT38-6 SPDT(HD)38-6 | SPFR38-6 SPFR(HD)38-6 |
| 44cm~53cm   | SPDT44-3 SPDT(HD)44-3 | SPFR44-3 SPFR(HD)44-3 | SPDT44-6 SPDT(HD)44-6 | SPFR44-6 SPFR(HD)44-6 |

## ALPS Silicone Pro Liner

The ALPS Silicone Pro is a medical grade silicone 1/5 the friction of regular silicone. The liner is protected by ALPS knitted fabric and is available in Locking or Cushion Suspension. The liner comfortably suspends patients in their prosthesis and allows for freedom of movement.



| Measurement | Thickness (3mm) |           |
|-------------|-----------------|-----------|
|             | Locking         | Cushion   |
| 14cm~17cm   | SLS3.0-14       | SLC3.0-14 |
| 16cm~19cm   | SLS3.0-16       | SLC3.0-16 |
| 18cm~21cm   | SLS3.0-18       | SLC3.0-18 |
| 20cm~23cm   | SLS3.0-20       | SLC3.0-20 |
| 22cm~25cm   | SLS3.0-22       | SLC3.0-22 |
| 24cm~25cm   | SLS3.0-24       | SLC3.0-24 |
| 26cm~27cm   | SLS3.0-26       | SLC3.0-26 |
| 28cm~31cm   | SLS3.0-28       | SLC3.0-28 |
| 30cm~33cm   | SLS3.0-30       | SLC3.0-30 |
| 32cm~37cm   | SLS3.0-32       | SLC3.0-32 |
| 35cm~37cm   | SLS3.0-35       | SLC3.0-35 |
| 38cm~47cm   | SLS3.0-38       | SLC3.0-38 |
| 44cm~53cm   | SLS3.0-44       | SLC3.0-44 |

## ALPS Padsil Silicone Distal Pad size for S~XXL

The Padsil was developed to increase patient comfort in combination with ALPS liners. The more active user will appreciate the additional cushioning, softness, and durability. Users who experience volume changes will also appreciate the Padsil's ability to lift the limb back in to the proper position. They can be placed at the bottom of the socket or inside a pin locking liner.



| Measurement | Size    |
|-------------|---------|
| 14cm~19cm   | PDS-S   |
| 20cm~23cm   | PDS-M   |
| 24cm~27cm   | PDS-L   |
| 28cm~31cm   | PDS-XL  |
| 32cm~35cm   | PDS-XXL |

## ALPS Skin Reliever High elasticity Gel Sheath size for 10cm~37cm

The ALPS Skin Reliever, made with EasyGel, eliminates shear forces, friction, and prevents abrasions on the skin of the stump. It's tapered structure accommodates volume fluctuations over the life of the prosthesis. It provides superior elongation for very little compression against the skin, reducing abrasions. ALPS Skin Reliever can be worn under silicone or gel, and can be used to replace socks.



| Measurement | Size   |
|-------------|--------|
| 10cm~19cm   | ENCP16 |
| 20cm~27cm   | ENCP20 |
| 28cm~37cm   | ENCP28 |





## MACHINE & TOOLS

### Infrared Oven With Removable Support Plate



Model sensor for process control via material temperature, mobile with four locking casters, 2x swinging doors with double-glazed viewing window, interior divisible into three zones with shelves, microprocessor temperature control, touch screen operation, PID controller function, continuously variable temperature 50° C to 250° C, temperature unit switchable ° C / ° F , timer and ramp functions individually programmable, graphical gradient display, multilingual user interface (DE, EN, FR, IT), interior lighting 2x 25 watt, interior stainless steel.

Dimensions WxDxH 1,230 x 920 x 1,950 mm

- Material Steel/stainless steel
- Interior dimensions WxDxH 1,000 x 620 x 1,790 mm
- Electrical connection in V/Hz/kW 3x 400/ 50-60/ 10.2
- Weight 360 kg
- Colour Light grey (RAL 7035)

To be used for Processing prepreg and thermoplastic materials

| Product Number | Power      | Max Temperature | Part Weight | Work Space          |
|----------------|------------|-----------------|-------------|---------------------|
| HKI—01         | 6KW AC220V | 300 C           | 360Kg       | 1000 x 620 x 120 mm |

## 220V Socket Router

This router motor has variable speed incl. motor brake For connection to a central dust suction unit with a minimum air flow of 20 m/s and a low pressure of 680 Pa Suction connection as per the machine requirement Router motor on a robust steel stand

Electronic Features Protective circuit according to German VDE Specification with low voltage release Emergency floor push stop On/Off router motor switch Main safety switch Appropriate cord length with safety plug

Basic Equipment Adjustable suction nozzle Shaft housing, long Spanner as per the machine requirements Threaded stud for router tools

Technical Data Space requirement (WxD) should not be

more than 900 x 1500 mm Work height should not be less than 1000 mm Motor speed infinitely variable: 0-2800 RPM or more Sound level should be less than 70 db Router shaft length should be equal or more than 430 mm Tapered spindle Router motor: 230 V / 50 Hz / minimum 1KW

Attachment are available according to customer requirement

Note: Modification in size of Socket Router, Speed phase are available according to customer requirement.

- Vibration-free thanks to their solid steel housing and solid construction
- Durable motor which is designed for reliable performance, year after year
- Electric height adjustment
- Grinding and milling motor can be tilted 180° and rotated 165°
- Integrated tool holder
- Short and long milling shaft guards
- Matching connector for 5/8" and M16 tools
- Efficient dust protection thanks to built-in protective shaft guard with extra extension –dust is extracted directly where it arises.
- Suction hood with quick-change system
- Your choice of accent colour (Specification accent colour: anthracite grey)



| Product Number | Power        | Speed                               | Part Weight | Work Dimensions      |
|----------------|--------------|-------------------------------------|-------------|----------------------|
| HKI-02         | 2.2KW AC220V | Variable Rotation Speed, Max. 3,500 | 200Kg       | 1150 X 930 X 1650 mm |

## Hip Leveling Guide



| Product Number | Material | Part Weight |
|----------------|----------|-------------|
| HKG-330        | Aluminum | 300g        |

## Surform



| Product Number | Material | Specification |
|----------------|----------|---------------|
| CHF-10         | Steel    | 10 Inch       |

## Bending Iron



| Product Number | Material | Specification |
|----------------|----------|---------------|
| CHF-1146       | Steel    | 4mm-6mm       |
| CHF-1157       | Steel    | 5mm-7mm       |
| CHF-1168       | Steel    | 6mm-8mm       |
| CHF-1179       | Steel    | 7mm-9mm       |
| CHF-11810      | Steel    | 8mm-10mm      |



CHF-09C



CHF-09F



CHF-09SC

| Product Number | Material | Specification |
|----------------|----------|---------------|
| CHF—09F        | Steel    | Flat          |
| CHF—09SC       |          | Semi-Circle   |
| CHF—09C        |          | Circle        |



 **0086-13521594020****Address**

No.7-10, Hua Guan Science and Technology  
Industrial Park, YanJiao, HeBei, China  
065201

**website**

[www.limb-prosthetic.com](http://www.limb-prosthetic.com)

**Email**

[frank\\_geng@chppros.com](mailto:frank_geng@chppros.com)

**whatsapp/ wechat**

+8613521594020